

1. eHealth Kerala - Vital Statistics

Hospital Type	Live Institutions
Family Health Centre	57
Community Health Centre	17
Urban Primary Health Centre	7
Medical College Hospital	4
Primary Health Centre	4
Taluk Hospital	3
District Hospital	2
General Hospital	2
Taluk Headquarters Hospital	2
District TB Centre	1
Empanelled Diagnostic Centre	1
Government Dispensary	1
Public Health Laboratory	1
Specialty Hospital	1
Specialty Hospital - Mental Health	1
Specialty Hospital - Pulmonary Medicine	1
Specialty Hospital - Women Children	1
Total	106

2. eHealth - District Ranking Matrix Based on Performance of all Institutions (except Medical Colleges)

The ranking matrix showcase the district performance in providing eHealth services through all institutions (except Medical Colleges) based on six different parameters. These parameters include whether the reception module is started or not, UHID Visits, Doctor Consultation, Pharmacy Prescriptions by doctors, Percentage of lab orders through doctors and number of Live Institutions. Based on the ranking, the districts are classified into three broad categories, the best performing districts, the average performing districts and the low performing districts.

The best performing districts should strive to continue to remain in the same position, whereas the average performing as well as the low performing districts should strive to reach to the 'top four' league.

The ranking matrix for the current month October '23 along with previous two months are as given in the table .

District	August	September	October
WAYANAD	1	1	1
PATHANAMTHITTA	2	2	2
IDUKKI	3	3	3
PALAKKAD	6	3	3
KANNUR	7	5	4
KOTTAYAM	7	5	4
MALAPPURAM	10	5	4
ALAPPUZHA	6	6	5
KOLLAM	5	5	5
THRISSUR	4	4	5
KASARAGOD	9	8	6
KOZHIKODE	8	7	6
THIRUVANANTHAPURAM	7	7	6
ERNAKULAM	10	9	7

- Best performing
- Average performing
- Low performing

3. eHealth - Institution Level Ranking (except Medical Colleges)

Hospital	Rank
Family Health Centre Anakudy	1
Family Health Centre Kottukal	1
Family Health Centre Poozhanad	2
Family Health Centre Pulimath	2
Family Health Centre Amachal New	3
Family Health Centre Edava	3
Family Health Centre Kollayil	3
Family Health Centre Maranalloor	3
Family Health Centre Panavoor	3
Primary Health Centre Vellayani	3
Community Health Centre Venpakal	4
Family Health Centre Balaramapuram	4
Family Health Centre Kadakampally	4
Family Health Centre Kallikkad New	4
Family Health Centre Karakulam	4
Family Health Centre Kuttichal	4
Family Health Centre Manickal	4
Family Health Centre Mukkola	4
Family Health Centre Paraniyam	4
Family Health Centre Perumpazhuthoor	4
Family Health Centre Pozhiyoor	4
Primary Health Centre Kalliyoor	4
Family Health Centre Anad	5
Family Health Centre Aruvikkara	5
Family Health Centre Kunnathukal	5
Family Health Centre Parasuvaikkal Parasala	5
Family Health Centre Pullampara	5
Family Health Centre Veeranakavu	5
Urban Primary Health Centre Chalai	5
Urban Primary Health Centre Mambazhakkara	5
Community Health Centre Pallickal	6
Community Health Centre Perumkadavila	6
Family Health Centre Amboori	6
Family Health Centre Cherunniyoor	6
Family Health Centre Jagathy	6
Family Health Centre Karavaram	6
Family Health Centre Tholicode	6

Hospital	Rank
Community Health Centre Vellanaad	14
Family Health Centre Chenkal	14
Family Health Centre Perumathura	14
Hds Laboratory Mch Trivandrum	14
Community Health Centre Kanyakulangara	13
Community Health Centre Puthenthope	13
Community Health Centre Vellarada	13
Family Health Centre Thonnakkal	13
General Hospital Thiruvananthapuram	13
Integrated Family Health Centre Pangappara	13
Mental Health Centre Peroorkada	13
Secretariat Health Centre Thiruvananthapuram	13
Taluk Headquarters Hospital Chirayinkeezh	13
Taluk Headquarters Hospital Varkala	13
Taluk Hospital Fort Thiruvananthapuram	13
Taluk Hospital Vithura	13
Women And Children Hospital Thycaud	13
Community Health Centre Andoorkonam	12
Community Health Centre Kallara	12
Community Health Centre Manamboor	12
Community Health Centre Poovar	12
District Hospital Nedumangad	12
District Model Hospital Peroorkada	12
Family Health Centre Puthukurichy	12
General Hospital Neyyattinkara	12
Community Health Centre Vilappil	11
Family Health Centre Kilimanoor	11
Family Health Centre Thonipara	11
Family Health Centre Vilavoorkkal	11
Chest Diseases Hospital Pulayanarkottah	10
Community Health Centre Anchuthengu	10
District Tb Centre Thiruvananthapuram	10
Family Health Centre Chemmaruthy	10
Family Health Centre Poonthura	10
Primary Health Centre Azhoor	10
Primary Health Centre Bharathannoor	10
State Public Health Clinical Laboratory	10

3.1 eHealth Performance - Reception Module

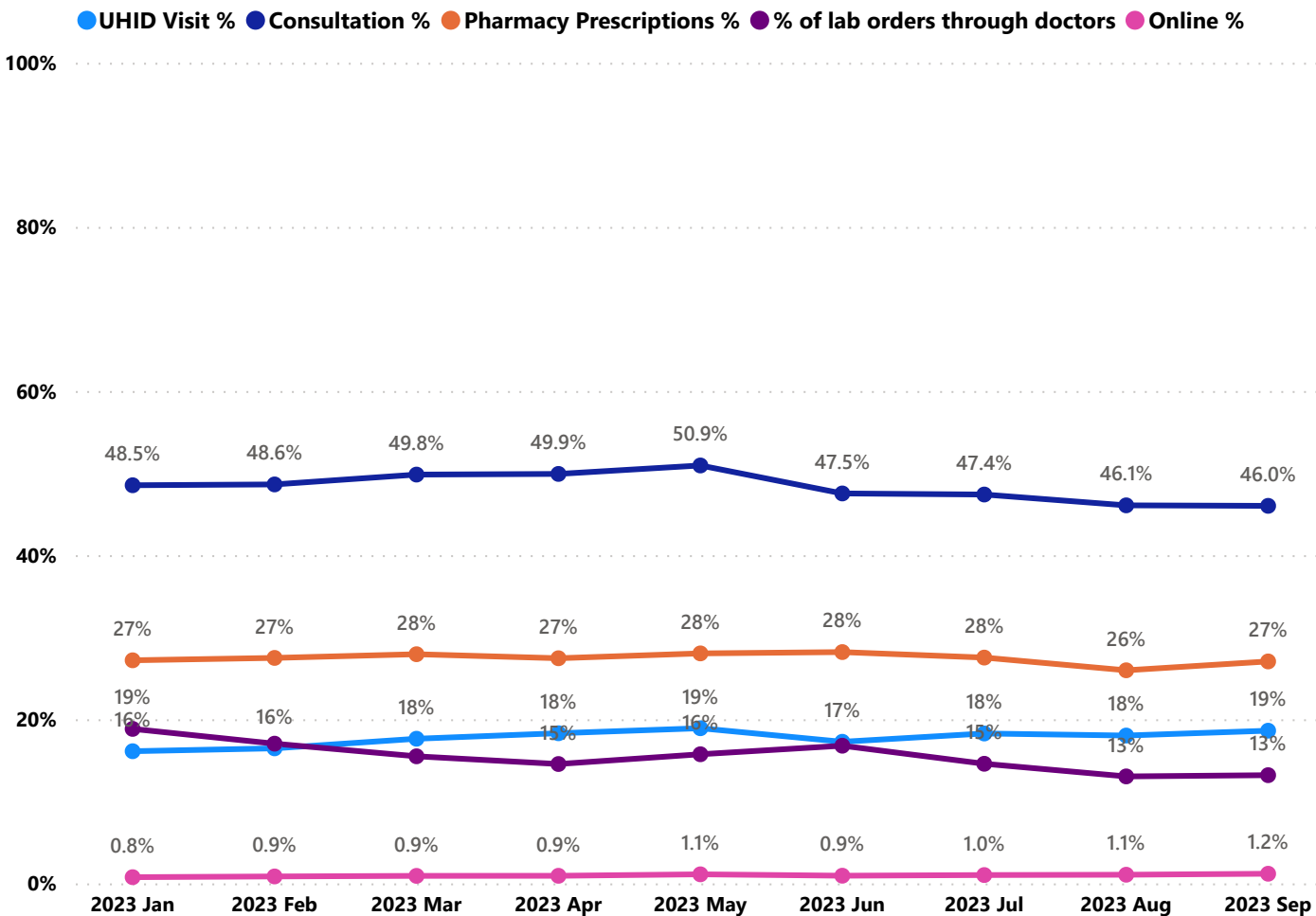
Reception Module is considered to be functional in an institution only if the number of total visits for the month is of minimum 500.

District	Institution Count	Institutions with Reception	% of institutions with Reception
WAYANAD	17	17	100.00%
PALAKKAD	44	43	97.73%
IDUKKI	20	19	95.00%
KANNUR	39	37	94.87%
PATHANAMTHITTA	19	18	94.74%
MALAPPURAM	53	50	94.34%
THIRUVANANTHAPURAM	102	96	94.12%
KASARAGOD	23	21	91.30%
ALAPPUZHA	31	28	90.32%
KOLLAM	30	27	90.00%
THRISSUR	69	60	86.96%
KOZHIKODE	54	46	85.19%
KOTTAYAM	31	26	83.87%
ERNAKULAM	49	36	73.47%

Hospital Name
HDS LABORATORY MCH TRIVANDRUM
FAMILY HEALTH CENTRE VELI
FAMILY HEALTH CENTRE UZHAMALAKKAL
FAMILY HEALTH CENTRE PERUMATHURA
FAMILY HEALTH CENTRE CHENKAL
COMMUNITY HEALTH CENTRE VELLANAD

Institutions where the reception module is either not started or not using

3.2 e-Health Performance Trend



- UHID Visit % is calculated as (UHID Visits / Total Visit) *100
- Consultation % is calculated as (Doctor Consultation / OP Visits) *100
- Pharmacy % is calculated as (Pharmacy Prescriptions/ Total OP Visits) *100
- Lab % is calculated as (Lab orders given by doctors/Total Lab Orders) *100
- Online % is calculated as (Online appointments via web portal/Total OP Visits) *100

3.3 e-Health Performance Indicators

Institutions with atleast 100 UHID visits are listed here.

Hospital	UHID Visit %	Consultation %	Pharmacy Prescriptions %	% of Lab Orders given by Doctors
Family Health Centre Anakudy	95.28%	98.73%	90.41%	38.97%
Urban Health Centre Mannanthala	87.00%	44.40%	1.08%	
Family Health Centre Kottukal	73.00%	96.88%	84.89%	41.01%
Family Health Centre Pullampara	65.26%	51.87%	47.09%	17.27%
Family Health Centre Veeranakavu	62.77%	57.05%	45.35%	19.62%
Family Health Centre Parasuvaikkal Parasala	58.50%	99.80%	95.22%	
Family Health Centre Karavaram	57.87%	64.16%	58.24%	14.49%
Family Health Centre Maranalloor	55.59%	94.76%	76.59%	23.57%
Family Health Centre Kallikkad New	54.82%	85.01%	73.83%	55.56%
Family Health Centre Peringammala	53.70%	51.17%	12.90%	6.96%
Family Health Centre Perumpazhuthoor	53.70%	80.71%	67.56%	59.39%
Family Health Centre Malayadi	51.06%	68.82%	42.24%	
Family Health Centre Poozhanad	49.33%	96.68%	84.18%	78.06%
Family Health Centre Amachal New	48.92%	99.97%	79.24%	66.95%
Family Health Centre Pulimath	48.62%	90.98%	84.06%	33.39%
Community Health Centre Aryanad	47.37%	18.58%	5.88%	9.26%
Community Health Centre Venpakal	44.54%	87.26%	72.56%	54.02%
Community Health Centre Vilappil	43.89%	9.25%	6.24%	0.36%
Community Health Centre Pallickal	42.61%	68.79%	50.77%	14.77%
Family Health Centre Kuttichal	41.91%	89.71%	75.93%	63.09%
Family Health Centre Tholicode	41.70%	76.37%	34.53%	27.33%
Urban Primary Health Centre Chalai	41.30%	87.44%	43.66%	100.00%
Family Health Centre Kilimanoor	40.87%	34.58%	31.01%	0.71%
Family Health Centre Aruvikkara	40.14%	89.99%	48.98%	56.42%
Family Health Centre Kollayil	39.54%	91.37%	80.08%	100.00%
Primary Health Centre Vellayani	37.45%	97.81%	86.19%	72.11%
Family Health Centre Thonipara	36.95%	70.22%	28.90%	1.20%
Family Health Centre Pallichal	36.53%	45.44%	41.27%	32.04%
Family Health Centre Edava	35.47%	90.93%	87.99%	22.97%
Family Health Centre Karode	34.96%	95.81%	55.38%	0.48%
Family Health Centre Amboori	34.72%	86.73%	76.79%	5.91%
Family Health Centre Paraniyam	33.90%	99.49%	74.13%	88.72%
Family Health Centre Vamanapuram	33.84%	79.46%	56.34%	69.84%
Family Health Centre Mukkola	33.74%	89.06%	86.49%	58.44%
Family Health Centre Anad	32.48%	88.77%	74.51%	83.55%
Family Health Centre Balaramapuram	30.19%	98.24%	70.02%	35.46%
Family Health Centre Keezhattingal	28.08%	58.60%	36.02%	95.83%
Family Health Centre Panavoor	26.82%	92.85%	90.99%	65.05%
Family Health Centre Vettoor	26.10%	51.00%	40.33%	83.65%
Community Health Centre Poovar	25.96%	17.85%	0.48%	0.07%
Community Health Centre Manamboor	25.71%	40.16%	8.23%	
Primary Health Centre Kalliyoor	25.63%	94.73%	72.45%	61.58%
Family Health Centre Chemboor	25.11%	75.83%	36.11%	7.10%

3.3 e-Health Performance Indicators

Institutions with atleast 100 UHID visits are listed here.

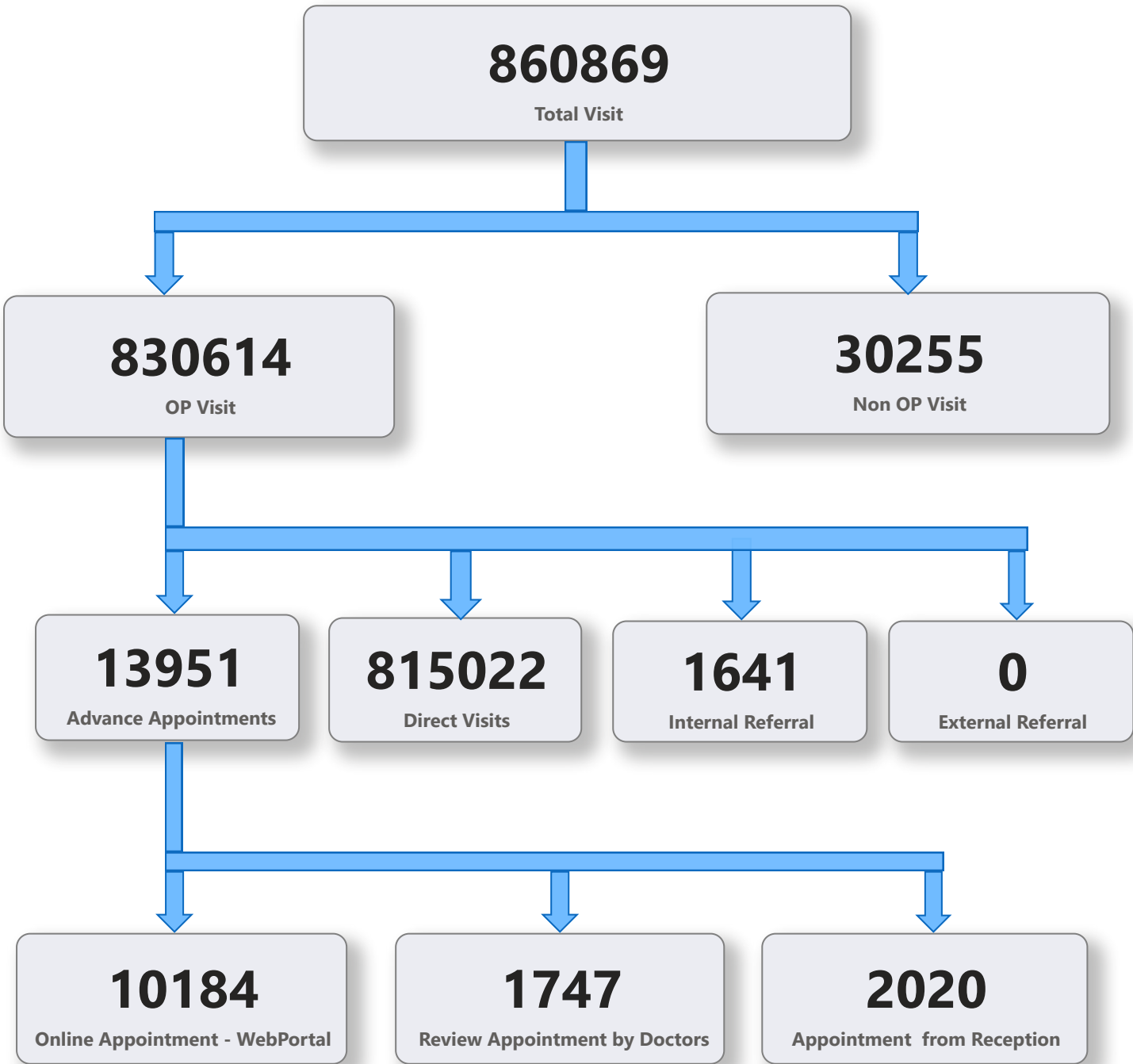
Hospital	UHID Visit %	Consultation %	Pharmacy Prescriptions %	% of Lab Orders given by Doctors
District Hospital Nedumangad	1.81%	7.00%	0.00%	4.59%
Community Health Centre Vellarada	1.94%	47.64%	0.00%	1.76%
Community Health Centre Perumkadavila	1.96%	93.49%	47.43%	22.44%
Taluk Hospital Fort Thiruvananthapuram	2.06%	0.85%	0.00%	
Taluk Headquarters Hospital Chirayinkeezh	2.31%	3.47%	0.00%	0.01%
Coastal Speciality Hospital Valiyathura	2.94%	84.89%	47.63%	100.00%
Urban Primary Health Centre Thrikkannapuram	3.83%	67.29%	50.27%	100.00%
Community Health Centre Puthenthope	3.97%	0.48%	0.00%	0.00%
Taluk Hospital Nemom	4.23%	27.76%	12.14%	8.80%
Family Health Centre Jagathy	4.42%	85.78%	78.95%	61.94%
Community Health Centre Anchuthengu	5.69%	30.09%	4.83%	28.30%
Family Health Centre Thonnakkal	5.79%	47.77%	39.14%	0.76%
Community Health Centre Iranimuttom	6.74%	93.89%	44.78%	3.09%
Taluk Headquarters Hospital Varkala	7.16%	21.00%	0.00%	0.11%
Women And Children Hospital Thycaud	7.53%	23.26%	0.07%	1.51%
Family Health Centre Madavoor	7.63%	53.39%	51.05%	100.00%
Family Health Centre Vembayam	7.81%	92.44%	57.64%	27.67%
Primary Health Centre Azhoor	9.58%	35.60%	22.51%	100.00%
Family Health Centre Kadakampally	9.75%	98.54%	83.40%	50.71%
Chest Diseases Hospital Pulayanarkottah	10.03%	40.75%	14.22%	7.25%
Family Health Centre Vattiyookavu	10.47%	68.68%	68.68%	79.39%
District Model Hospital Peroorkada	10.98%	28.39%	11.44%	3.60%
Community Health Centre Kesavapuram	11.40%	78.50%	17.26%	9.77%
Family Health Centre Manickal	11.43%	95.65%	83.29%	54.76%
Taluk Hospital Vithura	11.56%	32.40%	8.39%	0.76%
Family Health Centre Pozhiyoor	11.81%	98.14%	87.22%	82.37%
Community Health Centre Kanyakulangara	12.00%	12.41%	10.84%	3.00%
General Hospital Thiruvananthapuram	12.67%	7.44%	1.00%	0.24%
Family Health Centre Cherunniyoor	12.68%	86.20%	60.80%	100.00%
Family Health Centre Kulathoor	16.22%	80.52%	53.55%	47.41%
Integrated Family Health Centre Pangappara	17.79%	1.82%	0.01%	
Family Health Centre Mudakkal	17.85%	81.41%	0.00%	39.55%
Urban Primary Health Centre Muttada	17.99%	91.62%	57.42%	73.03%
Secretariat Health Centre Thiruvananthapuram	18.67%	1.12%	0.00%	
Family Health Centre Mangalapuram	20.30%	43.68%	32.77%	33.79%
Family Health Centre Kunnathukal	20.65%	77.02%	67.43%	55.07%
Family Health Centre Karakulam	21.00%	95.76%	78.61%	92.84%
Community Health Centre Palode	21.42%	68.94%	27.04%	33.78%
Family Health Centre Chemmaruthy	22.37%	67.27%	57.99%	1.17%
Family Health Centre Kattakada	22.55%	68.98%	40.67%	23.96%
Community Health Centre Andoorkonam	22.92%	5.75%	0.00%	0.00%
General Hospital Neyyattinkara	24.18%	26.65%	1.52%	0.02%
Community Health Centre Kallara	24.79%	0.00%	0.00%	0.00%

4. Status of Modules Usage in Hospitals

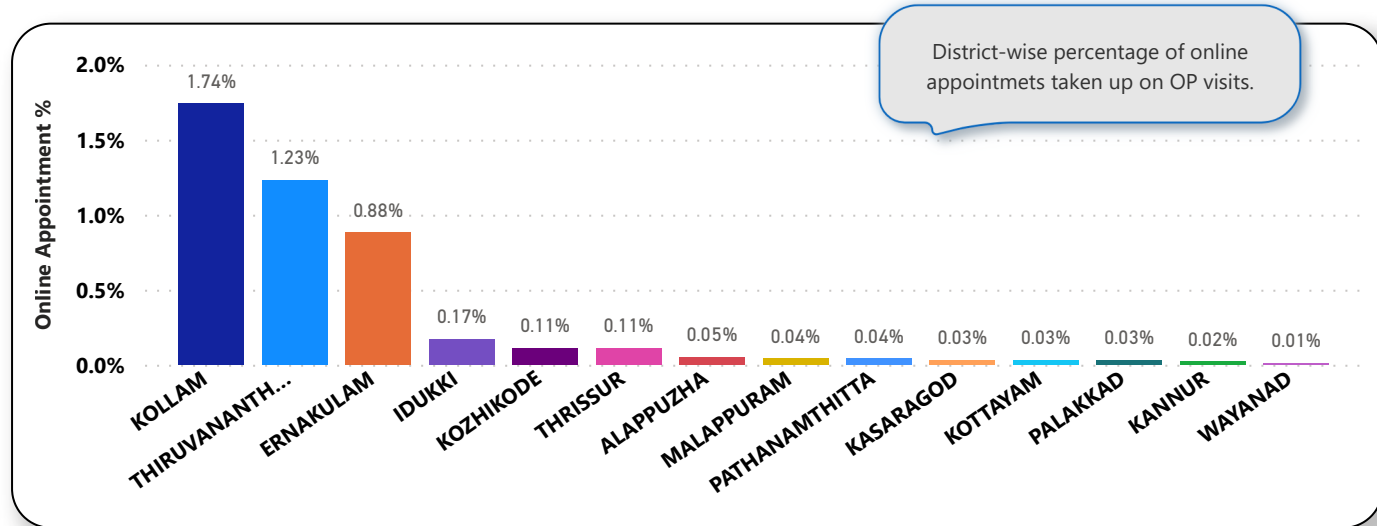
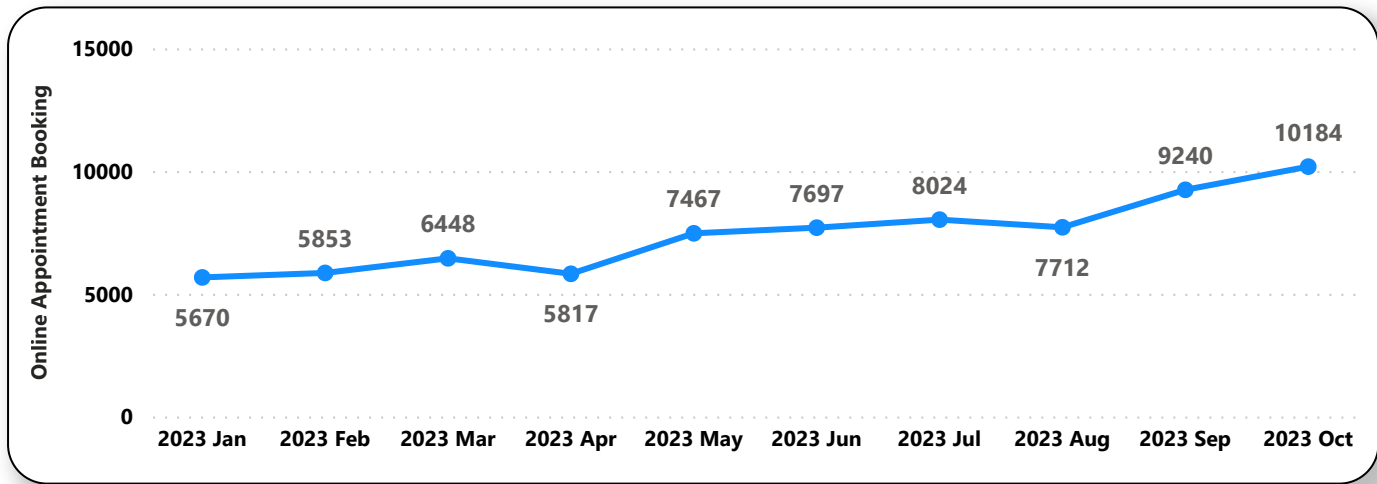
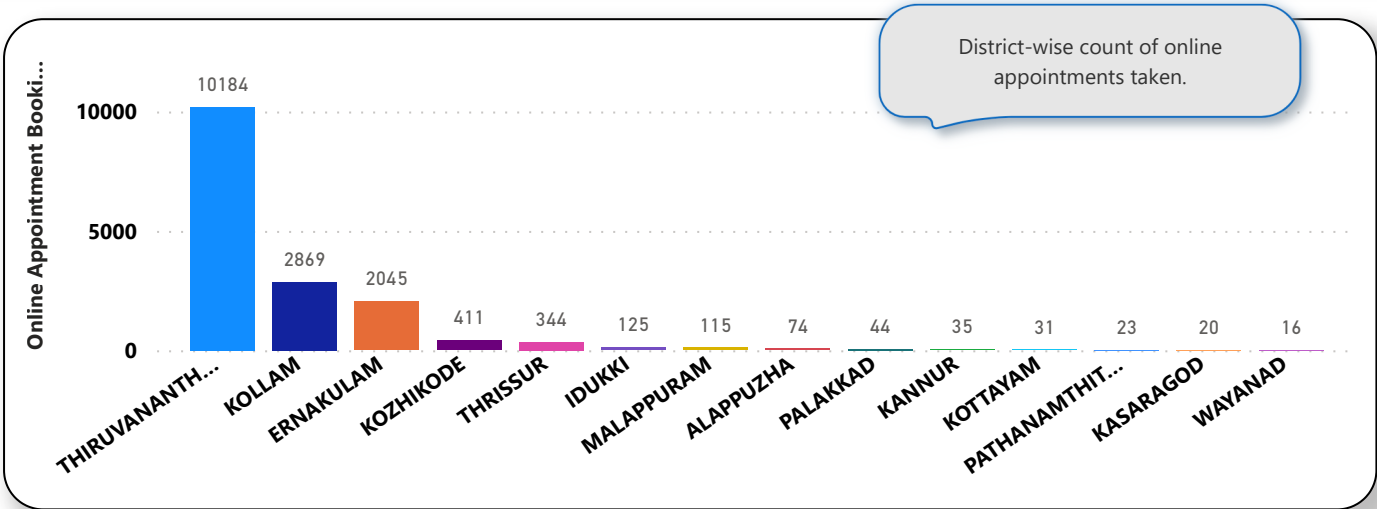
District wise status of live institutions and the count of various modules [Reception, OP Consultation, Lab, Pharmacy] started / functional.

District Name	Live Institutions	Reception	Consultation	Lab	Pharmacy
THIRUVANANTHAPURAM	102	95 (93.1%)	91 (89.2%)	79 (77.5%)	74 (72.5%)
THRISSUR	69	60 (87.%)	57 (82.6%)	54 (78.3%)	54 (78.3%)
KOZHIKODE	54	44 (81.5%)	35 (64.8%)	35 (64.8%)	35 (64.8%)
MALAPPURAM	53	50 (94.3%)	49 (92.5%)	42 (79.2%)	40 (75.5%)
ERNAKULAM	49	38 (77.6%)	33 (67.3%)	21 (42.9%)	16 (32.7%)
PALAKKAD	44	43 (97.7%)	40 (90.9%)	33 (75.%)	32 (72.7%)
KANNUR	39	35 (89.7%)	33 (84.6%)	27 (69.2%)	29 (74.4%)
ALAPPUZHA	31	29 (93.5%)	28 (90.3%)	26 (83.9%)	28 (90.3%)
KOTTAYAM	31	27 (87.1%)	25 (80.6%)	19 (61.3%)	24 (77.4%)
KOLLAM	30	29 (96.7%)	29 (96.7%)	26 (86.7%)	27 (90.%)
KASARAGOD	23	19 (82.6%)	17 (73.9%)	12 (52.2%)	16 (69.6%)
IDUKKI	20	19 (95.%)	18 (90.%)	14 (70.%)	18 (90.%)
PATHANAMTHITTA	19	18 (94.7%)	17 (89.5%)	15 (78.9%)	15 (78.9%)
WAYANAD	17	17 (100.%)	17 (100.%)	16 (94.1%)	17 (100.%)
Total	581	523 (90.%)	489 (84.2%)	419 (72.1%)	425 (73.1%)

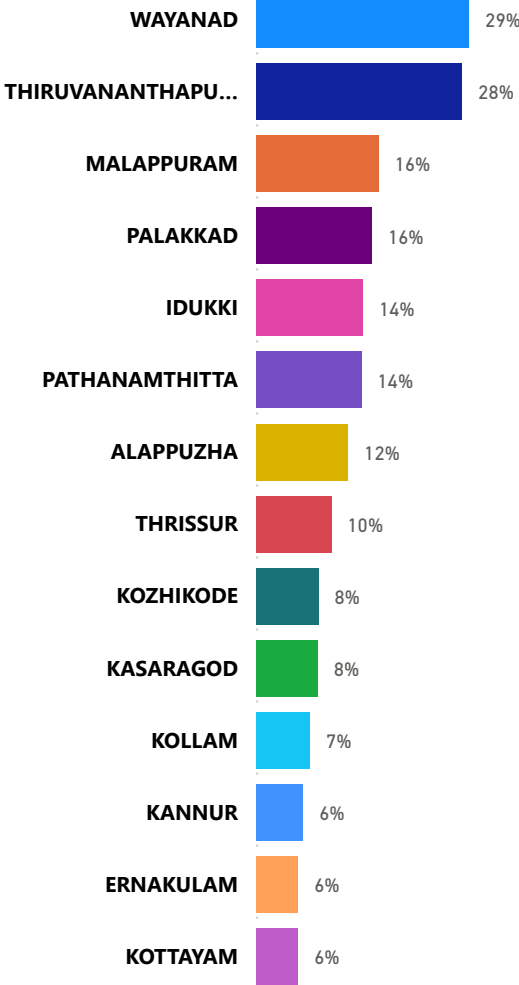
5. Appointment Booking in Hospitals (except Medical Colleges)



5. 1 Online Appointment Booking in Hospitals (except Medical Colleges)



6. eHealth Performance - Reach



Reach indicates the percentage of population availing services through eHealth. The formula used to calculate is (Number of UHID registered / Population) * 100 %.