

1. eHealth Kerala - Vital Statistics

Hospital Type	Live Institutions
Family Health Centre	18
Taluk Headquarters Hospital	4
General Hospital	2
District Hospital	1
Medical College Hospital	1
Urban Primary Health Centre	1
Total	27

2. eHealth - District Ranking Matrix Based on Performance of all Institutions (except Medical Colleges)

The ranking matrix showcases the performance of districts in providing eHealth services through all institutions (excluding Medical Colleges) based on six different parameters.

These parameters include:

1.

Number of institutions where the reception module is currently using.
2.

Percentage of UHID Visits.
3.

Percentage of Doctor Consultations.
4.

Percentage of Pharmacy Prescriptions by doctors.
5.

Percentage of lab orders through doctors.
6.

Number of Live Institutions.

Weightage is assigned to the percentages calculated in intervals of 10. The rank is determined based on the sum of these weightages.

The top-performing districts should aim to maintain their positions, while the average and low-performing districts should strive to reach the 'top four' league.

The ranking matrix for the current month, April 2025, along with the previous two months, is provided in the table below.

District	February	March	April
IDUKKI	1	1	1
WAYANAD	1	1	2
THRISSUR	3	3	3
ALAPPUZHA	4	4	4
PALAKKAD	2	2	4
KOZHIKODE	6	6	5
MALAPPURAM	5	5	5
KOLLAM	6	6	6
PATHANAMTHITTA	6	6	6
KOTTAYAM	8	8	7
THIRUVANANTHAPURAM	8	8	8
ERNAKULAM	9	9	9
KANNUR	7	7	9
KASARAGOD	7	8	9

- Best performing
- Average performing
- Low performing

3. eHealth - Institution Level Ranking (except Medical Colleges)

Hospital	Rank
URBAN FAMILY HEALTH CENTRE THIRUVALLA	1
FAMILY HEALTH CENTRE KOIPURAM	2
FAMILY HEALTH CENTRE OTHERA	2
FAMILY HEALTH CENTRE CHANDANAPPALLY	3
FAMILY HEALTH CENTRE EZHAMKULAM	3
FAMILY HEALTH CENTRE MEZHUVELI	3
FAMILY HEALTH CENTRE THANNITHODE	3
FAMILY HEALTH CENTRE VADASSERIKKARA	3
FAMILY HEALTH CENTRE KOTTANGAL	4
FAMILY HEALTH CENTRE PANDALAM	5
FAMILY HEALTH CENTRE ANICADU	6
FAMILY HEALTH CENTRE PALLICKAL	6
FAMILY HEALTH CENTRE CHENNEERKARA	7
FAMILY HEALTH CENTRE NARANAMMOOZHY	7
FAMILY HEALTH CENTRE NIRANAM	7
FAMILY HEALTH CENTRE VECHOOCHIRA	8
FAMILY HEALTH CENTRE CHITTAR	9
FAMILY HEALTH CENTRE KADAMMANITTA	10
Family Health Centre Nedumpuram	11
GENERAL HOSPITAL PATHANAMTHITTA	12
DISTRICT HOSPITAL KOZHENCHERRY	13
GENERAL HOSPITAL ADOOR	13
TALUK HEAD QUARTERS HOSPITAL KONNI	13
TALUK HEAD QUARTERS HOSPITAL MALLAPPALLY	13
Taluk Head Quarters Hospital Thiruvalla	13
TALUK HEADQUARTERS HOSPITAL M C C M RANNI	14

3.1 eHealth Performance - Reception Module

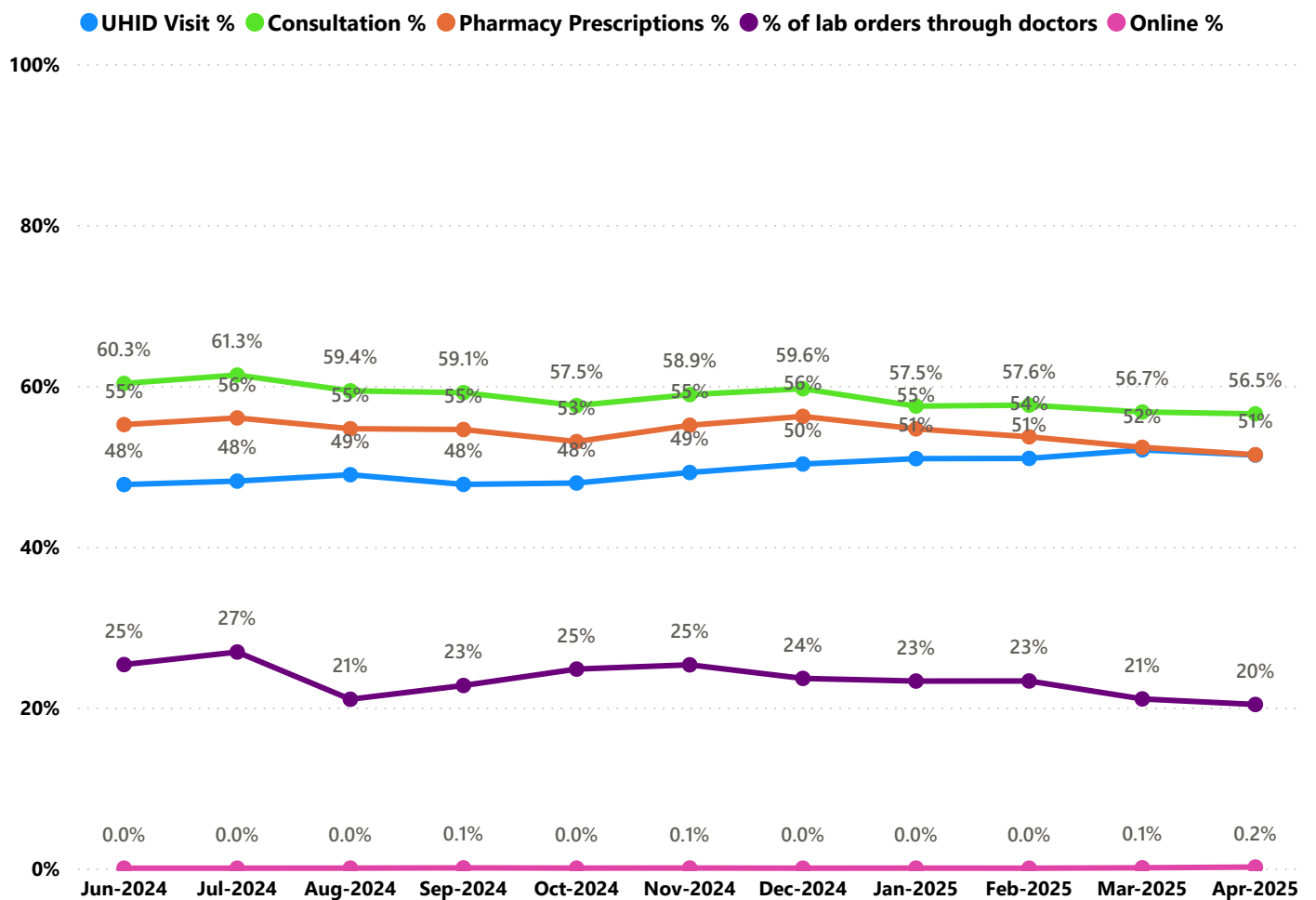
Reception Module is considered to be functional in an institution only if the number of total visits for the month is of minimum 500.

District	Institution Count	Institutions with Reception	% of institutions with Reception
WAYANAD	26	26	100.00%
KOZHIKODE	64	61	95.31%
THRISSUR	77	71	92.21%
THIRUVANANTHAPURAM	104	95	91.35%
MALAPPURAM	63	56	88.89%
IDUKKI	27	23	85.19%
ERNAKULAM	81	68	83.95%
ALAPPUZHA	43	36	83.72%
PALAKKAD	53	44	83.02%
KOTTAYAM	41	33	80.49%
KASARAGOD	29	23	79.31%
KANNUR	53	41	77.36%
PATHANAMTHITTA	26	20	76.92%
KOLLAM	42	32	76.19%

Hospital Name
TALUK HEADQUARTERS HOSPITAL M C C M RANNI
Taluk Head Quarters Hospital Thiruvalla
TALUK HEAD QUARTERS HOSPITAL MALLAPPALLY
TALUK HEAD QUARTERS HOSPITAL KONNI
GENERAL HOSPITAL ADOOR
DISTRICT HOSPITAL KOZHENCHERRY

Institutions where the reception module is either not started or not using

3.2 e-Health Performance Trend



- UHID Visit % is calculated as $(UHID\ Visits / Total\ Visit) * 100$
- Consultation % is calculated as $(Doctor\ Consultation / OP\ Visits) * 100$
- Pharmacy % is calculated as $(Pharmacy\ Prescriptions / Total\ OP\ Visits) * 100$
- Lab % is calculated as $(Lab\ orders\ given\ by\ doctors / Total\ Lab\ Orders) * 100$
- Online % is calculated as $(Online\ appointments\ via\ web\ portal / Total\ OP\ Visits) * 100$

3.3 e-Health Performance Indicators

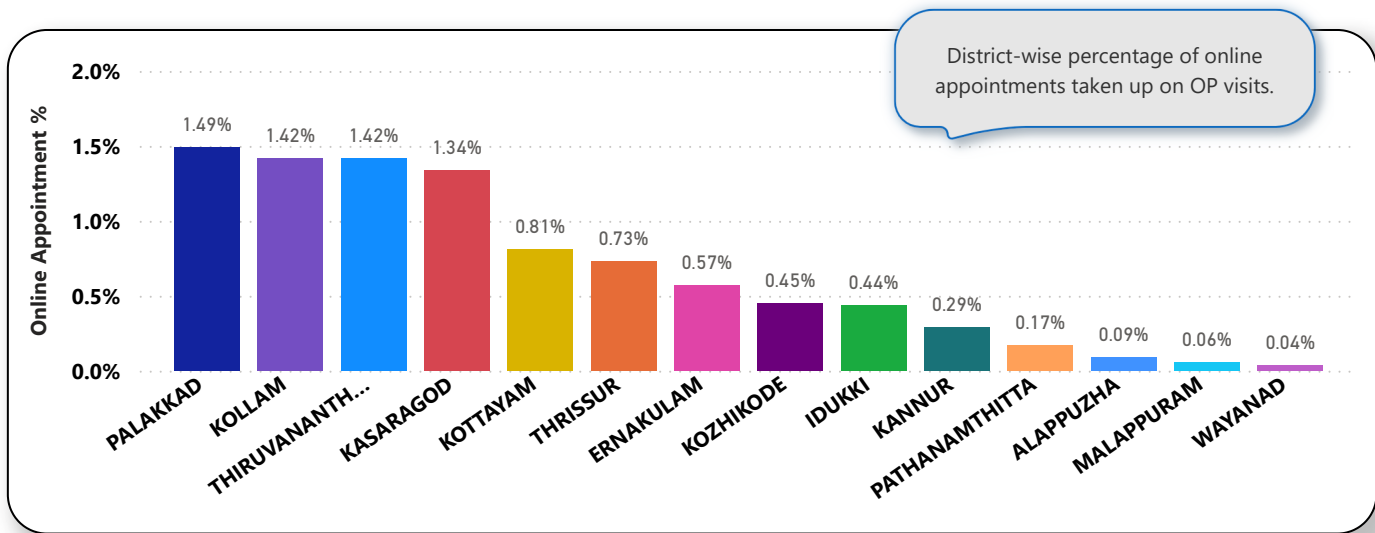
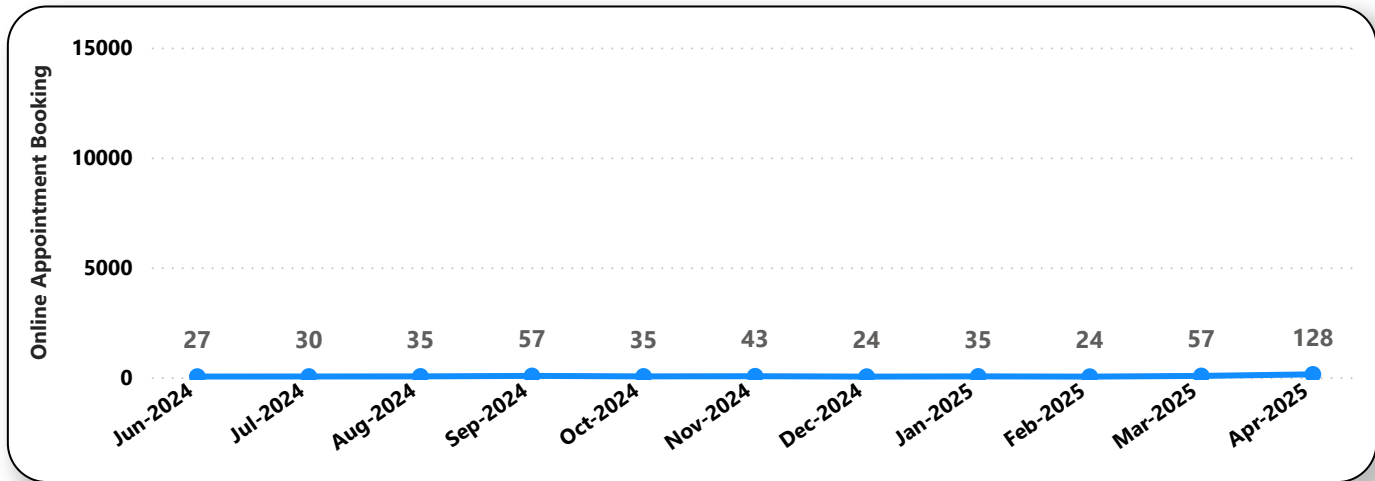
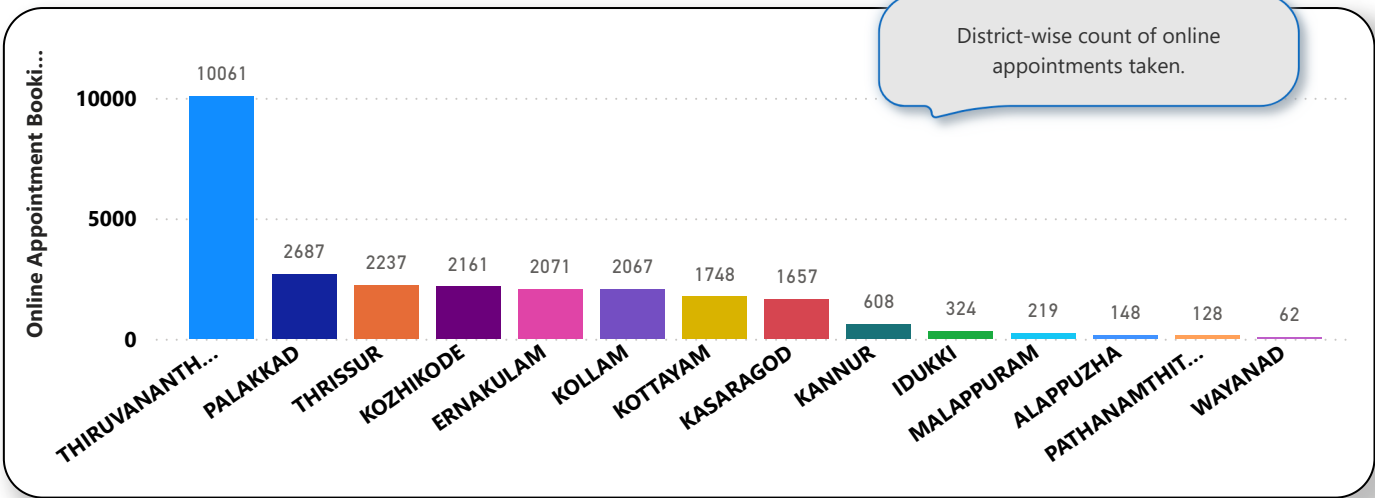
Hospital	UHID Visit %	Consultation %	Pharmacy Prescriptions %	% of Lab Orders given by Doctors
DISTRICT HOSPITAL KOZHENCHERRY	100.00%	0.00%	0.00%	0.00%
GENERAL HOSPITAL ADOOR	100.00%	0.00%	0.00%	0.00%
TALUK HEAD QUARTERS HOSPITAL KONNI	100.00%	0.00%	0.00%	0.00%
TALUK HEAD QUARTERS HOSPITAL MALLAPPALLY	100.00%	0.00%	0.00%	0.00%
Taluk Head Quarters Hospital Thiruvalla	100.00%	0.00%	0.00%	0.00%
FAMILY HEALTH CENTRE ANICADU	89.52%	71.05%	83.38%	59.70%
FAMILY HEALTH CENTRE VADASSERIKKARA	86.93%	98.41%	91.73%	53.62%
FAMILY HEALTH CENTRE NARANAMMOOZHY	86.14%	99.79%	91.44%	0.00%
FAMILY HEALTH CENTRE KOTTANGAL	84.86%	99.47%	87.57%	59.35%
FAMILY HEALTH CENTRE THANNITHODE	82.42%	95.66%	86.31%	62.64%
FAMILY HEALTH CENTRE MEZHUVELI	81.95%	99.84%	99.22%	59.12%
FAMILY HEALTH CENTRE PALLICKAL	77.54%	99.80%	93.85%	35.41%
FAMILY HEALTH CENTRE EZHAMKULAM	73.30%	99.58%	93.20%	68.05%
URBAN FAMILY HEALTH CENTRE THIRUVALLA	72.13%	97.19%	90.16%	96.53%
FAMILY HEALTH CENTRE CHITTAR	71.90%	58.34%	51.60%	5.73%
FAMILY HEALTH CENTRE KADAMMANITTA	68.39%	0.00%	0.00%	0.00%
FAMILY HEALTH CENTRE KOIPURAM	67.23%	100.00%	91.55%	81.18%
FAMILY HEALTH CENTRE NIRANAM	64.53%	85.25%	76.68%	50.66%
FAMILY HEALTH CENTRE OTHERA	63.84%	98.65%	90.72%	80.85%
FAMILY HEALTH CENTRE VECHOOCHIRA	63.66%	79.12%	76.37%	28.72%
FAMILY HEALTH CENTRE CHENNEERKARA	63.02%	96.47%	85.95%	30.72%
FAMILY HEALTH CENTRE CHANDANAPPALLY	62.17%	99.75%	88.14%	86.98%
FAMILY HEALTH CENTRE PANDALAM	55.61%	99.32%	85.15%	79.22%
Family Health Centre Nedumpuram	26.61%	26.15%	0.00%	6.90%
GENERAL HOSPITAL PATHANAMTHITTA	17.58%	0.00%	0.00%	0.00%
TALUK HEADQUARTERS HOSPITAL M C C M RANNI	0.00%	0.00%	0.00%	0.00%

4. Status of Modules Usage in Hospitals

District wise status of live institutions and the count of various modules [Reception, OP Consultation, Lab, Pharmacy] started / functional.

District	Live Institutions	Reception	Consultation	Pharmacy	Lab
THIRUVANANTHAPURAM	104	95 (91%)	88 (85%)	77 (74%)	79 (76%)
ERNAKULAM	81	68 (84%)	56 (69%)	38 (47%)	40 (49%)
THRISSUR	77	71 (92%)	68 (88%)	64 (83%)	64 (83%)
KOZHIKODE	64	61 (95%)	56 (88%)	52 (81%)	53 (83%)
MALAPPURAM	63	56 (89%)	53 (84%)	48 (76%)	45 (71%)
KANNUR	53	41 (77%)	35 (66%)	30 (57%)	27 (51%)
PALAKKAD	53	44 (83%)	43 (81%)	39 (74%)	40 (75%)
ALAPPUZHA	43	36 (84%)	35 (81%)	35 (81%)	29 (67%)
KOLLAM	42	32 (76%)	31 (74%)	31 (74%)	29 (69%)
KOTTAYAM	41	33 (80%)	33 (80%)	32 (78%)	28 (68%)
KASARAGOD	29	23 (79%)	22 (76%)	20 (69%)	17 (59%)
IDUKKI	27	23 (85%)	22 (81%)	22 (81%)	21 (78%)
WAYANAD	27	26 (96%)	24 (89%)	24 (89%)	22 (81%)
PATHANAMTHITTA	26	20 (77%)	17 (65%)	17 (65%)	17 (65%)
Total	730	629 (86%)	583 (80%)	529 (72%)	511 (70%)

5. 1 Online Appointment Booking in Hospitals (except Medical Colleges)



6. eHealth Performance - Reach

Reach indicates the percentage of population availing services through eHealth. The formula used to calculate is (Number of UHID registered / Population) * 100 %.

