

1. eHealth Kerala - Vital Statistics

Hospital Type	Live Institutions
Family Health Centre	36
Urban Health Wellness Centre	9
Taluk Hospital	8
Urban Primary Health Centre	7
Primary Health Centre	4
Community Health Centre	1
District Hospital	1
General Hospital	1
Medical College Hospital	1
Specialty Hospital - Women Children	1
Taluk Headquarters Hospital	1
Total	70

2. Highlights



1. An increase in OP consultation was observed in December, with the percentage rising from 56% to 60.7%.

2. In December, Kannur(KNR) district is at 7th position in overall eHealth service delivery among all DHS and NHM institutions, excluding those that offer only Reception and Advance Appointment services.

3. UHID visits increased by 2% during December, rising from 34% to 36%.

4. The percentage of lab orders placed by doctors increased by 1% in December, rising from 50% to 51%.

5. Pharmacy prescriptions increased by 5% during the month of December, rising from 41% to 46%.

6. Family Health Centre Alakode Therthally has secured the top position in the eHealth institution-level ranking.



1. FHC Kottayam Malabar records the lowest UHID percentage among institutions.

2. GH Thalassery has the lowest consultation %

3. FHC Thillenkerry has the lowest Lab Orders by Doctors %.

4. The district ranked 7th in the district-wise percentage of online appointments taken up for OP visits, with nearly 0.82%.

2. eHealth - District Ranking Matrix Based on Performance of all Institutions (except Medical Colleges)

The ranking matrix showcases the performance of districts in providing eHealth services through all institutions (excluding Medical Colleges) based on six different parameters.

These parameters include:

1.

Percentage of institutions where the reception module is currently being used (except institution started with VPN)
2.

Percentage of UHID Visits.
3.

Percentage of Doctor Consultations.
4.

Percentage of Pharmacy Prescriptions by doctors.
5.

Percentage of lab orders by doctors.
6.

Percentage of Live Institutions.

Weightage is assigned to the percentages calculated in intervals of 10. The rank is determined based on the sum of these weightages.

The top-performing districts should aim to maintain their positions, while the average and low-performing districts should strive to reach the 'top four' league.

The ranking matrix for the current month, December 2025, along with the previous two months, is provided in the table below.

District	October	November	December
IDUKKI	1	1	1
WAYANAD	2	2	2
ALAPPUZHA	4	3	3
THRISSUR	3	4	4
MALAPPURAM	3	4	5
PALAKKAD	4	5	5
KASARAGOD	6	8	6
KOLLAM	7	6	6
KOZHIKODE	5	6	6
THIRUVANANTHAPURAM	7	7	6
KANNUR	8	9	7
KOTTAYAM	7	8	7
PATHANAMTHITTA	7	8	7
ERNAKULAM	8	10	8

- Best performing
- Average performing
- Low performing

NB: Institutions started via VPN (Reception/Advanced Appointment started)are not considered in the rank and usage calculations.

3. eHealth - Institution Level Ranking (except Medical Colleges)

Hospital	Rank
FAMILY HEALTH CENTRE ALAKODE THERTHALLY	1
FAMILY HEALTH CENTRE PARASSINIKADAVU	2
FAMILY HEALTH CENTRE RAMANTHALI	2
FAMILY HEALTH CENTRE UDAYAGIRI	2
FAMILY HEALTH CENTRE CHIRAKKAL	3
FAMILY HEALTH CENTRE NEW MAHE	3
FAMILY HEALTH CENTRE MALAPPATTAM	4
FAMILY HEALTH CENTRE VALAPATTANAM	4
FAMILY HEALTH CENTRE ANJARAKKANDY	5
FAMILY HEALTH CENTRE CHENGALAYI	6
FAMILY HEALTH CENTRE KUTTIATTOOR	6
FAMILY HEALTH CENTRE MUNDERI	7
FAMILY HEALTH CENTRE THRIPRANGOTTUR	7
FAMILY HEALTH CENTRE CHERUKUNNU	8
FAMILY HEALTH CENTRE ETTIKULAM	8
FAMILY HEALTH CENTRE KADIRUR	8
FAMILY HEALTH CENTRE PATTUVAM	8
FAMILY HEALTH CENTRE ERAMAM KUTTUR	9
FAMILY HEALTH CENTRE MOKERI	9
COMMUNITY HEALTH CENTRE KOOTTUMUGHAM	10
FAMILY HEALTH CENTRE KUNHIMANGALAM	10
PRIMARY HEALTH CENTRE KURUMATHUR	10
URBAN PRIMARY HEALTH CENTRE PANOOR	10
FAMILY HEALTH CENTRE CHERUTHAZHAM	11
FAMILY HEALTH CENTRE NARATH	11
FAMILY HEALTH CENTRE PUTHIYANGADI FISHERIES	11
FAMILY HEALTH CENTRE KADANNAPPALLY	12
FAMILY HEALTH CENTRE KANKOL ALAPPADAMBA	12
FAMILY HEALTH CENTRE MORAZHA FISHERIES	12
COMMUNITY HEALTH CENTRE MATTOOL	13
FAMILY HEALTH CENTRE VALLITHODE	14
EK NAYANAR MEMORIAL GOVT WOMEN AND CHILDREN HOSPITAL MANGATTUPARAMBA	15
FAMILY HEALTH CENTRE KUNNOTHUPARAMBA	15
FAMILY HEALTH CENTRE KOTTIYOOR	16
FAMILY HEALTH CENTRE MUZHAPPILANGAD	17
FAMILY HEALTH CENTRE THILLENKERRY	18

Hospital	Rank
FAMILY HEALTH CENTRE KALLIASSERY	27
FAMILY HEALTH CENTRE KODALI	27
URBAN PRIMARY HEALTH CENTRE KOLASSERY	27
FAMILY HEALTH CENTRE KOTTAYAM MALABAR	26
GENERAL HOSPITAL THALASSERY	25
TALUK HEAD QUARTERS HOSPITAL KUTHUPARAMBA	25
URBAN PRIMARY HEALTH CENTRE PORORA	24
FAMILY HEALTH CENTRE PULINGOME	23
COMMUNITY HEALTH CENTRE PATTIAM	22
URBAN PRIMARY HEALTH CENTRE MAITHANAPPALLY	21
FAMILY HEALTH CENTRE CHOKLI	20
URBAN PRIMARY HEALTH CENTRE KOOVODE	19
FAMILY HEALTH CENTRE THILLENKERRY	18
FAMILY HEALTH CENTRE MUZHAPPILANGAD	17
FAMILY HEALTH CENTRE KOTTIYOOR	16
EK NAYANAR MEMORIAL GOVT WOMEN AND CHILDREN HOSPITAL MANGATTUPARAMBA	15
FAMILY HEALTH CENTRE KUNNOTHUPARAMBA	15
FAMILY HEALTH CENTRE VALLITHODE	14
COMMUNITY HEALTH CENTRE MATTOOL	13
FAMILY HEALTH CENTRE KADANNAPPALLY	12
FAMILY HEALTH CENTRE KANKOL ALAPPADAMBA	12
FAMILY HEALTH CENTRE MORAZHA FISHERIES	12
FAMILY HEALTH CENTRE CHERUTHAZHAM	11
FAMILY HEALTH CENTRE NARATH	11
FAMILY HEALTH CENTRE PUTHIYANGADI FISHERIES	11
COMMUNITY HEALTH CENTRE KOOTTUMUGHAM	10
FAMILY HEALTH CENTRE KUNHIMANGALAM	10
PRIMARY HEALTH CENTRE KURUMATHUR	10
URBAN PRIMARY HEALTH CENTRE PANOOR	10
FAMILY HEALTH CENTRE ERAMAM KUTTUR	9
FAMILY HEALTH CENTRE MOKERI	9
FAMILY HEALTH CENTRE CHERUKUNNU	8
FAMILY HEALTH CENTRE ETTIKULAM	8
FAMILY HEALTH CENTRE KADIRUR	8
FAMILY HEALTH CENTRE PATTUVAM	8

3.1 eHealth Performance - Reception Module

Reception Module is considered to be functional in an institution only if the number of total visits for the month is of minimum 500.

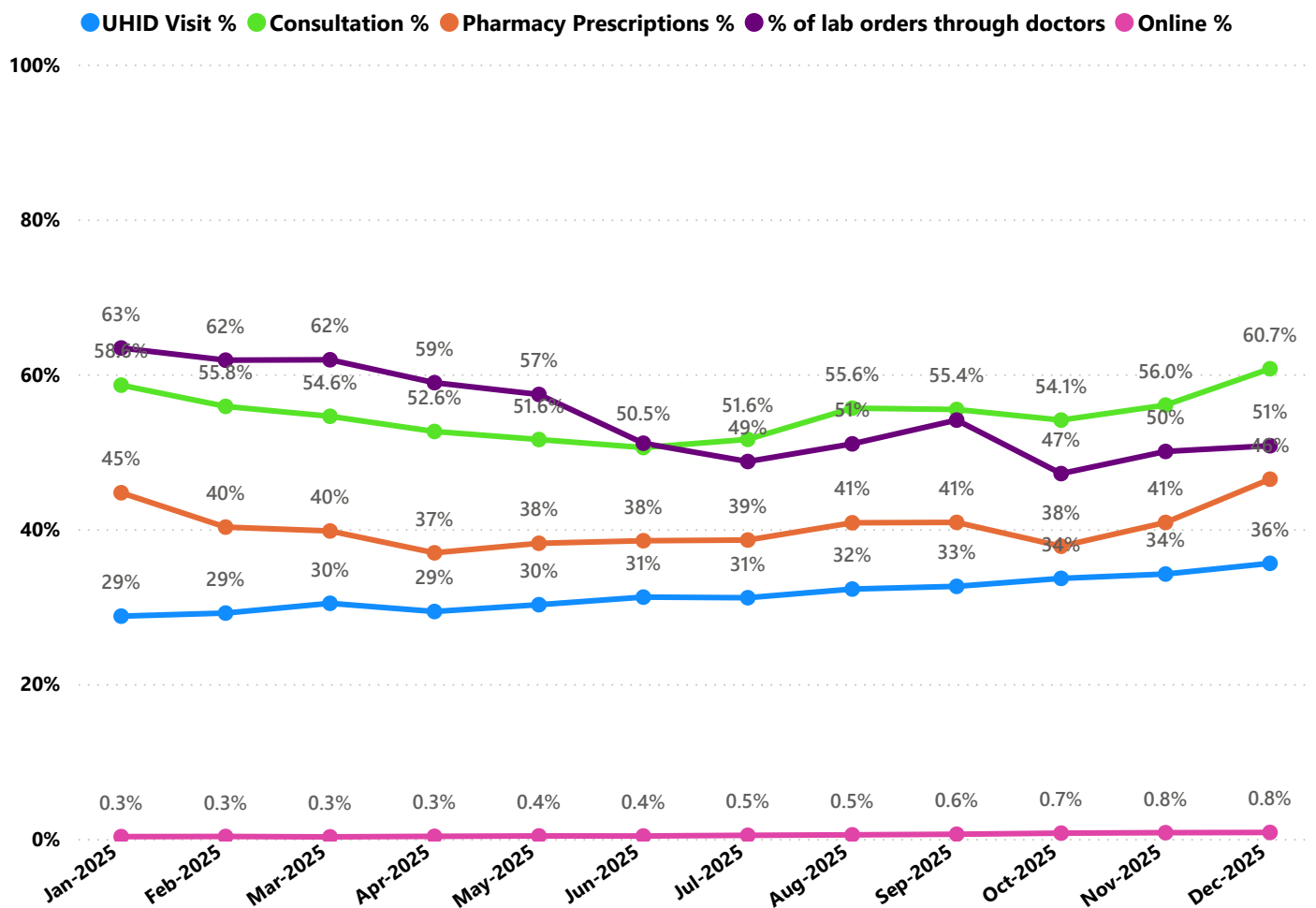
District	Institution Count	Institutions with Reception	% of institutions with Reception
THIRUVANANTHAPURAM	119	99	83.19%
ERNAKULAM	89	70	78.65%
MALAPPURAM	87	68	78.16%
THRISSUR	81	68	83.95%
KOZHIKODE	80	68	85.00%
PALAKKAD	61	49	80.33%
KANNUR	60	44	73.33%
ALAPPUZHA	55	43	78.18%
KOLLAM	52	36	69.23%
KOTTAYAM	45	38	84.44%
KASARAGOD	35	25	71.43%
WAYANAD	33	25	75.76%
PATHANAMTHITTA	32	23	71.88%
IDUKKI	27	22	81.48%

Institutions where the reception module is either not started or not using

Hospital Name

FAMILY HEALTH CENTRE KALLIASSERY
FAMILY HEALTH CENTRE KOODALI
URBAN PRIMARY HEALTH CENTRE KOLASSERY
URBAN PRIMARY HEALTH CENTRE MAITHANAPPALLY

3.2 e-Health Performance Trend



- UHID Visit % is calculated as $(UHID\ Visits / Total\ Visit) \times 100$
- Consultation % is calculated as $(Doctor\ Consultation / OP\ Visits) \times 100$
- Pharmacy % is calculated as $(Pharmacy\ Prescriptions / Total\ OP\ Visits) \times 100$
- Lab % is calculated as $(Lab\ orders\ given\ by\ doctors / Total\ Lab\ Orders) \times 100$
- Online % is calculated as $(Online\ appointments\ via\ web\ portal / Total\ OP\ Visits) \times 100$

3.3 e-Health Performance Indicators

Hospital	UHID Visit %	Consultation %	Pharmacy orders by doctors %	% of Lab Orders given by Doctors
FAMILY HEALTH CENTRE ALAKODE THERTHALLY	84.62%	98.58%	90.86%	96.85%
FAMILY HEALTH CENTRE UDAYAGIRI	83.16%	98.57%	88.74%	100.00%
FAMILY HEALTH CENTRE NEW MAHE	81.45%	98.26%	87.10%	88.24%
FAMILY HEALTH CENTRE CHIRAKKAL	79.09%	99.97%	87.56%	98.66%
FAMILY HEALTH CENTRE RAMANTHALI	75.07%	98.73%	91.58%	98.78%
FAMILY HEALTH CENTRE PARASSINIKADAVU	74.65%	98.41%	95.12%	100.00%
FAMILY HEALTH CENTRE VALAPATTANAM	63.72%	98.42%	89.03%	91.53%
FAMILY HEALTH CENTRE ANJARAKKANDY	60.20%	90.49%	88.04%	83.89%
FAMILY HEALTH CENTRE KUNHIMANGALAM	59.88%	89.76%	30.78%	85.41%
FAMILY HEALTH CENTRE ERAMAM KUTTUR	57.56%	90.29%	88.83%	42.37%
FAMILY HEALTH CENTRE PUTHIYANGADI FISHERIES	55.28%	100.00%	95.59%	0.00%
FAMILY HEALTH CENTRE PULINGOME	55.01%	9.86%	10.26%	5.33%
FAMILY HEALTH CENTRE CHERUKUNNU	52.85%	97.29%	77.67%	65.54%
FAMILY HEALTH CENTRE MALAPPATTAM	52.51%	95.82%	90.91%	100.00%
FAMILY HEALTH CENTRE CHENGALAYI	52.24%	98.67%	88.84%	75.42%
FAMILY HEALTH CENTRE KUTTIATTOOR	48.97%	91.42%	89.58%	89.66%
PRIMARY HEALTH CENTRE KURUMATHUR	48.28%	91.23%	89.74%	33.90%
FAMILY HEALTH CENTRE ETTIKULAM	46.24%	98.16%	86.17%	62.69%
FAMILY HEALTH CENTRE KANKOL ALAPPADAMBA	43.40%	88.31%	79.52%	38.76%
URBAN PRIMARY HEALTH CENTRE PORORA	42.82%	0.00%	0.00%	0.00%
FAMILY HEALTH CENTRE NARATH	41.66%	58.75%	54.83%	98.41%
FAMILY HEALTH CENTRE CHERUTHAZHAM	40.84%	98.39%	69.41%	50.00%
FAMILY HEALTH CENTRE MORAZHA FISHERIES	40.40%	93.72%	88.83%	13.84%
FAMILY HEALTH CENTRE KOTTIYOOR	39.25%	66.97%	65.41%	32.18%
FAMILY HEALTH CENTRE KADANNAPPALLY	39.14%	97.73%	75.09%	32.78%
FAMILY HEALTH CENTRE VALLITHODE	35.34%	93.90%	47.80%	48.75%
FAMILY HEALTH CENTRE PATTUVAM	31.46%	88.67%	85.78%	82.21%
FAMILY HEALTH CENTRE KUNNOTHUPARAMBA	29.81%	78.05%	50.66%	57.61%
FAMILY HEALTH CENTRE THRIPRANGOTTUR	28.02%	98.64%	96.19%	89.83%
EK NAYANAR MEMORIAL GOVT WOMEN AND CHILDREN HOSPITAL MANGATTUPARAMBA	26.78%	61.06%	21.67%	100.00%
COMMUNITY HEALTH CENTRE KOOTTUMUGHAM	26.69%	98.35%	90.14%	45.06%
FAMILY HEALTH CENTRE MUNDERI	26.52%	99.80%	89.01%	97.31%
FAMILY HEALTH CENTRE KADIRUR	25.40%	96.97%	76.33%	94.70%
COMMUNITY HEALTH CENTRE PATTIAM	24.39%	52.25%	0.00%	0.00%
COMMUNITY HEALTH CENTRE MATTOOL	23.60%	91.28%	71.73%	30.54%
GENERAL HOSPITAL THALASSERY	21.83%	6.76%	0.01%	0.00%
FAMILY HEALTH CENTRE CHOKLI	20.85%	72.31%	9.61%	9.96%
TALUK HEAD QUARTERS HOSPITAL KUTHUPARAMBA	20.44%	0.00%	0.00%	0.00%
URBAN PRIMARY HEALTH CENTRE PANOOR	19.00%	91.25%	78.56%	71.90%
FAMILY HEALTH CENTRE MOKERI	18.16%	95.02%	79.75%	97.83%
URBAN PRIMARY HEALTH CENTRE KOOVODE	17.27%	55.51%	45.37%	14.32%

3.3 e-Health Performance Indicators

Hospital	UHID Visit %	Consultation %	Pharmacy ordered by doctors %	% of Lab Orders given by Doctors
FAMILY HEALTH CENTRE KOTTAYAM MALABAR	11.68%	0.00%	0.00%	0.00%
FAMILY HEALTH CENTRE MUZHAPPILANGAD	16.70%	53.27%	1.03%	100.00%
FAMILY HEALTH CENTRE THILLENKERRY	17.03%	76.75%	58.65%	3.35%
URBAN PRIMARY HEALTH CENTRE KOOVODE	17.27%	55.51%	45.37%	14.32%
FAMILY HEALTH CENTRE MOKERI	18.16%	95.02%	79.75%	97.83%
URBAN PRIMARY HEALTH CENTRE PANOOR	19.00%	91.25%	78.56%	71.90%
TALUK HEAD QUARTERS HOSPITAL KUTHUPARAMBA	20.44%	0.00%	0.00%	0.00%
FAMILY HEALTH CENTRE CHOKLI	20.85%	72.31%	9.61%	9.96%
GENERAL HOSPITAL THALASSERY	21.83%	6.76%	0.01%	0.00%
COMMUNITY HEALTH CENTRE MATTOOL	23.60%	91.28%	71.73%	30.54%
COMMUNITY HEALTH CENTRE PATTIAM	24.39%	52.25%	0.00%	0.00%
FAMILY HEALTH CENTRE KADIRUR	25.40%	96.97%	76.33%	94.70%
FAMILY HEALTH CENTRE MUNDERI	26.52%	99.80%	89.01%	97.31%
COMMUNITY HEALTH CENTRE KOOTTUMUGHAM	26.69%	98.35%	90.14%	45.06%
EK NAYANAR MEMORIAL GOVT WOMEN AND CHILDREN HOSPITAL MANGATTUPARAMBA	26.78%	61.06%	21.67%	100.00%
FAMILY HEALTH CENTRE THRIPRANGOTTUR	28.02%	98.64%	96.19%	89.83%
FAMILY HEALTH CENTRE KUNNOTHUPARAMBA	29.81%	78.05%	50.66%	57.61%
FAMILY HEALTH CENTRE PATTUVAM	31.46%	88.67%	85.78%	82.21%
FAMILY HEALTH CENTRE VALLITHODE	35.34%	93.90%	47.80%	48.75%
FAMILY HEALTH CENTRE KADANNAPPALLY	39.14%	97.73%	75.09%	32.78%
FAMILY HEALTH CENTRE KOTTIYOOR	39.25%	66.97%	65.41%	32.18%
FAMILY HEALTH CENTRE MORAZHA FISHERIES	40.40%	93.72%	88.83%	13.84%
FAMILY HEALTH CENTRE CHERUTHAZHAM	40.84%	98.39%	69.41%	50.00%
FAMILY HEALTH CENTRE NARATH	41.66%	58.75%	54.83%	98.41%
URBAN PRIMARY HEALTH CENTRE PORORA	42.82%	0.00%	0.00%	0.00%
FAMILY HEALTH CENTRE KANKOL ALAPPADAMBA	43.40%	88.31%	79.52%	38.76%
FAMILY HEALTH CENTRE ETTIKULAM	46.24%	98.16%	86.17%	62.69%
PRIMARY HEALTH CENTRE KURUMATHUR	48.28%	91.23%	89.74%	33.90%
FAMILY HEALTH CENTRE KUTTIATTOOR	48.97%	91.42%	89.58%	89.66%
FAMILY HEALTH CENTRE CHENGALAYI	52.24%	98.67%	88.84%	75.42%
FAMILY HEALTH CENTRE MALAPPATTAM	52.51%	95.82%	90.91%	100.00%
FAMILY HEALTH CENTRE CHERUKUNNU	52.85%	97.29%	77.67%	65.54%
FAMILY HEALTH CENTRE PULINGOME	55.01%	9.86%	10.26%	5.33%
FAMILY HEALTH CENTRE PUTHIYANGADI FISHERIES	55.28%	100.00%	95.59%	0.00%
FAMILY HEALTH CENTRE ERAMAM KUTTUR	57.56%	90.29%	88.83%	42.37%
FAMILY HEALTH CENTRE KUNHIMANGALAM	59.88%	89.76%	30.78%	85.41%
FAMILY HEALTH CENTRE ANJARAKKANDY	60.20%	90.49%	88.04%	83.89%
FAMILY HEALTH CENTRE VALAPATTANAM	63.72%	98.42%	89.03%	91.53%
FAMILY HEALTH CENTRE PARASSINIKADAVU	74.65%	98.41%	95.12%	100.00%
FAMILY HEALTH CENTRE RAMANTHALI	75.07%	98.73%	91.58%	98.78%
FAMILY HEALTH CENTRE CHIRAKKAL	79.09%	99.97%	87.56%	98.66%
FAMILY HEALTH CENTRE NEW MALE	81.45%	98.26%	87.10%	88.24%



Non - eHealth Institutions Started

District	VPN Institutions	Reception Started	Advance Appointment Started
THIRUVANANTHAPURAM	44	44	44
MALAPPURAM	38	34	34
ERNAKULAM	33	32	32
KOLLAM	30	26	26
ALAPPUZHA	27	27	27
THRISSUR	27	23	23
KOTTAYAM	24	24	24
PALAKKAD	22	21	21
KANNUR	21	15	15
KOZHIKODE	18	17	17
PATHANAMTHITTA	18	18	18
WAYANAD	16	16	16
KASARAGOD	13	13	13
IDUKKI	9	8	8
Total	340	318	318

4. Status of Modules Usage in Hospitals

District wise status of live institutions and the count of various modules [Reception, OP Consultation, Lab, Pharmacy] started / functional.

District	Live Institutions	Reception	Consultation	Pharmacy ordered by doctors	Lab ordered by doctors
THIRUVANANTHAPURAM	102	99 (97%)	91 (89%)	81 (79%)	82 (80%)
ERNAKULAM	73	70 (96%)	59 (81%)	55 (75%)	53 (73%)
THRISSUR	73	68 (93%)	66 (90%)	64 (88%)	63 (86%)
MALAPPURAM	70	68 (97%)	67 (96%)	59 (84%)	56 (80%)
KOZHIKODE	68	68 (100%)	59 (87%)	54 (79%)	56 (82%)
PALAKKAD	52	49 (94%)	46 (88%)	42 (81%)	40 (77%)
KANNUR	48	44 (92%)	40 (83%)	36 (75%)	35 (73%)
ALAPPUZHA	44	43 (98%)	42 (95%)	41 (93%)	38 (86%)
KOTTAYAM	42	38 (90%)	37 (88%)	32 (76%)	29 (69%)
KOLLAM	38	36 (95%)	34 (89%)	34 (89%)	32 (84%)
KASARAGOD	26	25 (96%)	21 (81%)	19 (73%)	18 (69%)
WAYANAD	25	25 (100%)	25 (100%)	25 (100%)	23 (92%)
PATHANAMTHITTA	23	23 (100%)	21 (91%)	21 (91%)	20 (87%)
IDUKKI	22	22 (100%)	22 (100%)	22 (100%)	21 (95%)
Total	706	678 (96%)	630 (89%)	585 (83%)	566 (80%)

The reception has started with at least 500 total visits, the OP module has started with at least 500 consultations, pharmacy orders by doctors are at least 100, and lab orders by doctors are at least 100.



5. Status of Modules Usage in Hospitals

District wise status of live institutions and the count of various modules [Reception, OP Consultation, Lab, Pharmacy] started / functional.

District	Reception Started	Consultation Started	Pharmacy Started	Billing Started	Lab Started
IDUKKI	22	22	22	16	19
PATHANAMTHITTA	23	21	21	18	18
KASARAGOD	25	21	22	18	17
WAYANAD	25	25	25	22	23
KOLLAM	36	34	35	35	32
KOTTAYAM	38	37	34	29	25
ALAPPUZHA	43	42	43	33	33
KANNUR	44	40	37	31	32
PALAKKAD	49	46	43	39	39
KOZHIKODE	68	59	55	59	51
MALAPPURAM	68	67	61	37	52
THRISSUR	68	66	65	59	63
ERNAKULAM	70	59	55	45	50
THIRUVANANTHAPURAM	99	91	86	80	81
Total	678	630	604	521	535

6. 1 Online Appointment Booking in Hospitals (except Medical Colleges)

