

1. eHealth Kerala - Vital Statistics

Hospital Type	Live Institutions
Family Health Centre	36
Taluk Hospital	8
Urban Primary Health Centre	7
Urban Health Wellness Centre	6
Primary Health Centre	4
Community Health Centre	1
District Hospital	1
General Hospital	1
Medical College Hospital	1
Specialty Hospital - Women Children	1
Taluk Headquarters Hospital	1
Total	67

2. Highlights



1. An increase in OP consultation was observed in November, with the percentage rising from 39% to 41%.
2. UHID visits increased by 2% during November, rising from 28% to 30%.
3. The percentage of lab orders placed by doctors increased by 3% in November, rising from 47% to 50%.
4. Pharmacy prescriptions increased by 1% during the month of November.
5. Family Health Centre Alakode Therthally has secured the top position in the eHealth institution-level ranking.



1. In November, Kannur(KNR) district dropped from 8th to 9th position in overall eHealth service delivery among all DHS and NHM institutions, excluding those that offer only Reception and Advance Appointment services.
2. FHC Kottayam Malabar records the lowest UHID percentage among institutions.
3. FHC Thillenkerry has the lowest consultation % and Lab Orders by Doctors %.
4. The district ranked 10th in the district-wise percentage of online appointments taken up for OP visits, with nearly 0.72%.

2. eHealth - District Ranking Matrix Based on Performance of all Institutions (except Medical Colleges)

The ranking matrix showcases the performance of districts in providing eHealth services through all institutions (excluding Medical Colleges) based on six different parameters.

These parameters include:

1.

Percentage of institutions where the reception module is currently using (except institution started with VPN)
2.

Percentage of UHID Visits.
3.

Percentage of Doctor Consultations.
4.

Percentage of Pharmacy Prescriptions by doctors.
5.

Percentage of lab orders by doctors.
6.

Percentage of Live Institutions.

Weightage is assigned to the percentages calculated in intervals of 10. The rank is determined based on the sum of these weightages.

The top-performing districts should aim to maintain their positions, while the average and low-performing districts should strive to reach the 'top four' league.

The ranking matrix for the current month, November 2025, along with the previous two months, is provided in the table below.

District	September	October	November
IDUKKI	1	1	1
WAYANAD	2	2	2
ALAPPUZHA	5	4	3
MALAPPURAM	4	3	4
THRISSUR	5	3	4
PALAKKAD	3	4	5
KOLLAM	8	7	6
KOZHIKODE	4	5	6
THIRUVANANTHAPURAM	6	7	7
KASARAGOD	4	6	8
KOTTAYAM	8	7	8
PATHANAMTHITTA	7	7	8
KANNUR	10	8	9
ERNAKULAM	9	8	10

- Best performing
- Average performing
- Low performing

NB: Institutions started via VPN (Reception/Advanced Appointment started)are not considered in the rank and usage calculations.

3. eHealth - Institution Level Ranking (except Medical Colleges)

Hospital	Rank
FAMILY HEALTH CENTRE ALAKODE THERTHALLY	1
FAMILY HEALTH CENTRE NEW MAHE	1
FAMILY HEALTH CENTRE PARASSINIKADAVU	1
FAMILY HEALTH CENTRE UDAYAGIRI	1
FAMILY HEALTH CENTRE CHIRAKKAL	2
FAMILY HEALTH CENTRE RAMANTHALI	2
FAMILY HEALTH CENTRE VALAPATTANAM	2
FAMILY HEALTH CENTRE MALAPPATTAM	3
FAMILY HEALTH CENTRE ANJARAKKANDY	4
FAMILY HEALTH CENTRE CHENGALAYI	4
FAMILY HEALTH CENTRE KUTTIATTOOR	4
FAMILY HEALTH CENTRE ETTIKULAM	5
FAMILY HEALTH CENTRE MUNDERI	5
FAMILY HEALTH CENTRE CHERUKUNNU	6
FAMILY HEALTH CENTRE ERAMAM KUTTUR	6
FAMILY HEALTH CENTRE KADIRUR	6
PRIMARY HEALTH CENTRE KURUMATHUR	6
FAMILY HEALTH CENTRE THRIPRANGOTTUR	7
FAMILY HEALTH CENTRE MOKERI	8
FAMILY HEALTH CENTRE NARATH	8
FAMILY HEALTH CENTRE CHERUTHAZHAM	9
FAMILY HEALTH CENTRE KANKOL ALAPPADAMBA	9
FAMILY HEALTH CENTRE MORAZHA FISHERIES	9
FAMILY HEALTH CENTRE PUTHIYANGADI FISHERIES	10
COMMUNITY HEALTH CENTRE MATTOOL	11
FAMILY HEALTH CENTRE PATTUVAM	11
URBAN PRIMARY HEALTH CENTRE MAITHANAPPALLY	11
FAMILY HEALTH CENTRE KUNHIMANGALAM	12
EK NAYANAR MEMORIAL GOVT WOMEN AND CHILDREN HOSPITAL MANGATTUPARAMBA	13
FAMILY HEALTH CENTRE KADANNAPPALLY	13
URBAN PRIMARY HEALTH CENTRE PANOOR	14
FAMILY HEALTH CENTRE KOTTIYOOR	15
FAMILY HEALTH CENTRE MUZHAPPILANGAD	16
FAMILY HEALTH CENTRE VALLITHODE	17
FAMILY HEALTH CENTRE PULINGOME	18
URBAN PRIMARY HEALTH CENTRE KOOVODE	19

Hospital	Rank
FAMILY HEALTH CENTRE KALLIASSERY	27
FAMILY HEALTH CENTRE KOODALI	27
URBAN PRIMARY HEALTH CENTRE KOLASSERY	27
PRIMARY HEALTH CENTRE CHOKLI	26
DISTRICT HOSPITAL KANNUR	25
FAMILY HEALTH CENTRE KOTTAYAM MALABAR	25
GENERAL HOSPITAL THALASSERY	25
URBAN PRIMARY HEALTH CENTRE KUTHUPARAMBA	25
TALUK HEAD QUARTERS HOSPITAL KUTHUPARAMBA	24
TALUK HOSPITAL PAYYANNUR	24
FAMILY HEALTH CENTRE THILLENKERRY	23
URBAN PRIMARY HEALTH CENTRE PORORA	22
FAMILY HEALTH CENTRE KUNNOTHUPARAMBA	21
COMMUNITY HEALTH CENTRE PATTIAM	20
URBAN PRIMARY HEALTH CENTRE KOOVODE	19
FAMILY HEALTH CENTRE PULINGOME	18
FAMILY HEALTH CENTRE VALLITHODE	17
FAMILY HEALTH CENTRE MUZHAPPILANGAD	16
FAMILY HEALTH CENTRE KOTTIYOOR	15
URBAN PRIMARY HEALTH CENTRE PANOOR	14
EK NAYANAR MEMORIAL GOVT WOMEN AND CHILDREN HOSPITAL MANGATTUPARAMBA	13
FAMILY HEALTH CENTRE KADANNAPPALLY	13
FAMILY HEALTH CENTRE KUNHIMANGALAM	12
COMMUNITY HEALTH CENTRE MATTOOL	11
FAMILY HEALTH CENTRE PATTUVAM	11
URBAN PRIMARY HEALTH CENTRE MAITHANAPPALLY	11
FAMILY HEALTH CENTRE PUTHIYANGADI FISHERIES	10
FAMILY HEALTH CENTRE CHERUTHAZHAM	9
FAMILY HEALTH CENTRE KANKOL ALAPPADAMBA	9
FAMILY HEALTH CENTRE MORAZHA FISHERIES	9
FAMILY HEALTH CENTRE MOKERI	8
FAMILY HEALTH CENTRE NARATH	8
FAMILY HEALTH CENTRE THRIPRANGOTTUR	7
FAMILY HEALTH CENTRE CHERUKUNNU	6

3.1 eHealth Performance - Reception Module

Reception Module is considered to be functional in an institution only if the number of total visits for the month is of minimum 500.

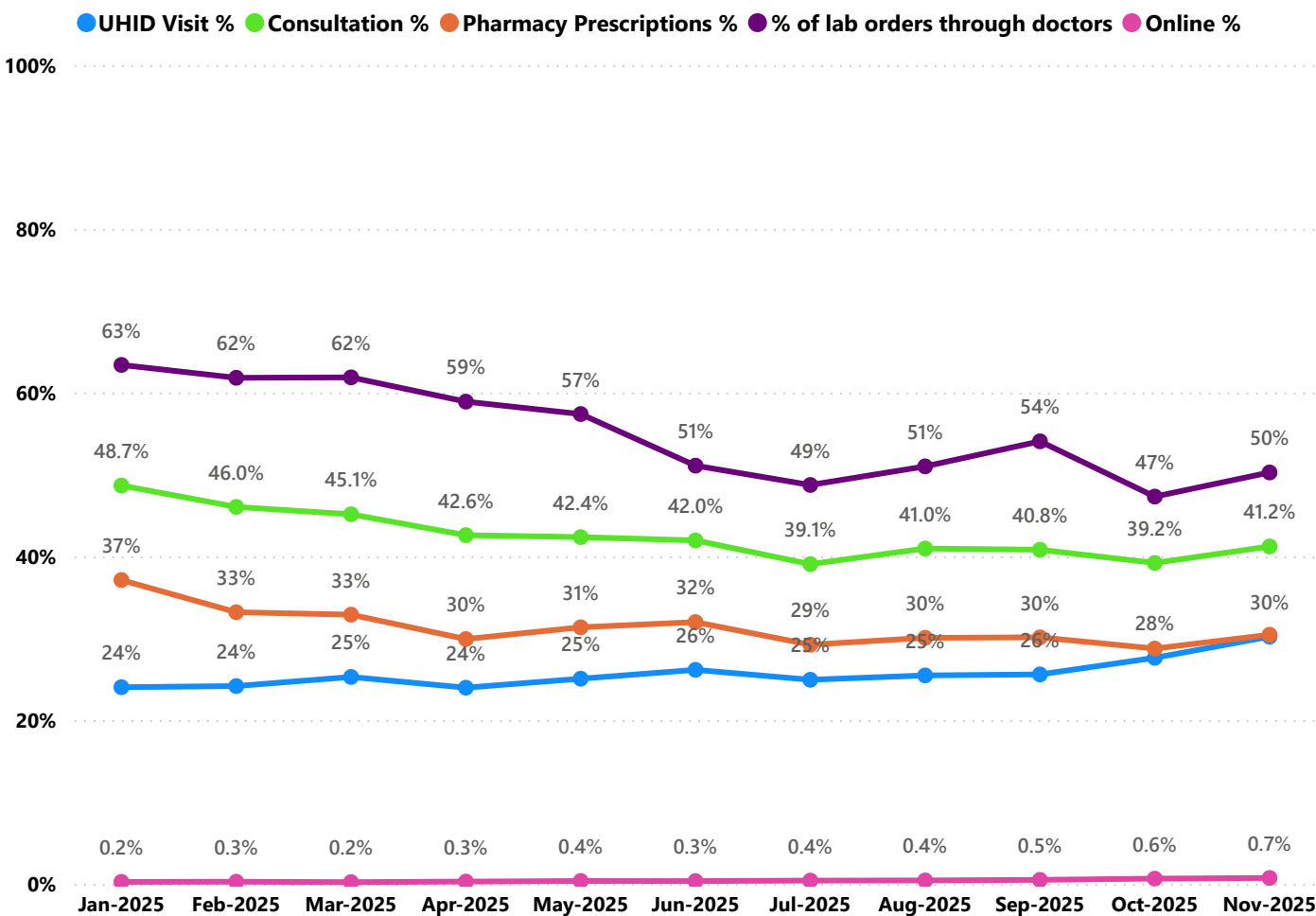
District	Institution Count	Institutions with Reception	% of institutions with Reception
THIRUVANANTHAPURAM	119	97	81.51%
ERNAKULAM	88	69	78.41%
MALAPPURAM	87	68	78.16%
THRISSUR	81	66	81.48%
KOZHIKODE	80	71	88.75%
PALAKKAD	61	48	78.69%
KANNUR	60	46	76.67%
ALAPPUZHA	54	38	70.37%
KOLLAM	50	37	74.00%
KOTTAYAM	45	41	91.11%
KASARAGOD	35	24	68.57%
WAYANAD	33	27	81.82%
PATHANAMTHITTA	32	25	78.12%
IDUKKI	27	22	81.48%

Institutions where the reception module is either not started or not using

Hospital Name

FAMILY HEALTH CENTRE KALLIASSERY
FAMILY HEALTH CENTRE KODALI
PRIMARY HEALTH CENTRE CHOKLI
URBAN PRIMARY HEALTH CENTRE KOLASSERY

3.2 e-Health Performance Trend



- UHID Visit % is calculated as (UHID Visits / Total Visit) *100
- Consultation % is calculated as (Doctor Consultation / OP Visits) *100
- Pharmacy % is calculated as (Pharmacy Prescriptions/ Total OP Visits) *100
- Lab % is calculated as (Lab orders given by doctors/Total Lab Orders) *100
- Online % is calculated as (Online appointments via web portal/Total OP Visits) *100

3.3 e-Health Performance Indicators

Hospital	UHID Visit %	Consultation %	Pharmacy orders by doctors %	% of Lab Orders given by Doctors
FAMILY HEALTH CENTRE UDAYAGIRI	83.04%	98.74%	89.83%	100.00%
FAMILY HEALTH CENTRE NEW MAHE	81.80%	95.55%	83.38%	92.51%
FAMILY HEALTH CENTRE ALAKODE THERTHALLY	81.23%	96.89%	87.35%	100.00%
FAMILY HEALTH CENTRE CHIRAKKAL	79.46%	99.81%	85.34%	97.22%
FAMILY HEALTH CENTRE PARASSINIKADAVU	78.60%	97.32%	92.56%	100.00%
FAMILY HEALTH CENTRE RAMANTHALI	73.82%	98.92%	89.82%	99.26%
FAMILY HEALTH CENTRE VALAPATTANAM	68.27%	98.40%	90.14%	92.18%
FAMILY HEALTH CENTRE ERAMAM KUTTUR	58.45%	92.00%	90.39%	40.74%
FAMILY HEALTH CENTRE KUNHIMANGALAM	57.19%	86.45%	0.18%	78.72%
FAMILY HEALTH CENTRE ANJARAKKANDY	56.15%	82.23%	80.31%	82.62%
FAMILY HEALTH CENTRE CHERUKUNNU	53.13%	98.66%	77.44%	67.01%
FAMILY HEALTH CENTRE MALAPPATTAM	52.70%	95.63%	91.00%	100.00%
FAMILY HEALTH CENTRE PULINGOME	52.56%	33.36%	35.55%	23.40%
FAMILY HEALTH CENTRE CHENGALAYI	51.62%	99.49%	91.74%	68.83%
PRIMARY HEALTH CENTRE KURUMATHUR	51.09%	94.12%	91.88%	43.73%
FAMILY HEALTH CENTRE PUTHIYANGADI FISHERIES	50.49%	100.00%	94.91%	0.00%
FAMILY HEALTH CENTRE ETTIKULAM	50.23%	99.07%	89.72%	65.15%
FAMILY HEALTH CENTRE KUTTIATTOOR	49.77%	89.13%	86.64%	94.23%
FAMILY HEALTH CENTRE KANKOL ALAPPADAMBA	43.93%	87.77%	78.50%	56.32%
FAMILY HEALTH CENTRE MORAZHA FISHERIES	43.56%	92.41%	85.31%	33.15%
URBAN PRIMARY HEALTH CENTRE PORORA	43.22%	0.00%	0.00%	0.00%
FAMILY HEALTH CENTRE NARATH	40.93%	71.03%	65.16%	85.39%
FAMILY HEALTH CENTRE CHERUTHAZHAM	40.15%	98.03%	63.34%	53.65%
FAMILY HEALTH CENTRE KOTTIYOOR	38.03%	66.55%	64.92%	25.04%
FAMILY HEALTH CENTRE KADANNAPPALLY	37.89%	89.41%	75.45%	20.00%
FAMILY HEALTH CENTRE VALLITHODE	37.37%	89.46%	0.05%	33.45%
URBAN PRIMARY HEALTH CENTRE MAITHANAPPALLY	30.86%	62.44%	52.87%	89.44%
FAMILY HEALTH CENTRE PATTUVAM	28.49%	83.08%	79.74%	54.98%
FAMILY HEALTH CENTRE MUNDERI	27.83%	99.49%	89.22%	96.82%
FAMILY HEALTH CENTRE KUNNOTHUPARAMBA	27.28%	26.18%	0.77%	24.35%
EK NAYANAR MEMORIAL GOVT WOMEN AND CHILDREN HOSPITAL MANGATTUPARAMBA	27.19%	64.98%	20.97%	98.91%
FAMILY HEALTH CENTRE KADIRUR	27.00%	95.93%	73.79%	91.86%
COMMUNITY HEALTH CENTRE PATTIAM	25.26%	63.82%	0.00%	0.00%
TALUK HOSPITAL PAYYANNUR	22.67%	0.00%	0.00%	0.00%
COMMUNITY HEALTH CENTRE MATTOOL	22.53%	95.19%	71.09%	42.19%
FAMILY HEALTH CENTRE THRIPRANGOTTUR	22.21%	97.50%	70.83%	83.09%
TALUK HEAD QUARTERS HOSPITAL KUTHUPARAMBA	20.52%	0.00%	0.00%	0.00%
GENERAL HOSPITAL THALASSERY	19.85%	0.00%	0.00%	0.00%
URBAN PRIMARY HEALTH CENTRE PANOOR	19.27%	51.84%	46.87%	85.42%
FAMILY HEALTH CENTRE MOKERI	18.17%	96.73%	71.63%	83.10%
FAMILY HEALTH CENTRE THILLENKERRY	16.23%	23.63%	8.95%	6.14%

3.3 e-Health Performance Indicators

Hospital	UHID Visit %	Consultation %	Pharmacy ordered by doctors %	% of Lab Orders given by Doctors
FAMILY HEALTH CENTRE KOTTAYAM MALABAR	12.45%	0.00%	0.00%	0.00%
URBAN PRIMARY HEALTH CENTRE KUTHUPARAMBA	14.59%	0.00%	0.00%	0.00%
DISTRICT HOSPITAL KANNUR	15.31%	0.00%	0.00%	0.00%
URBAN PRIMARY HEALTH CENTRE KOOVODE	15.34%	57.40%	46.92%	20.80%
FAMILY HEALTH CENTRE MUZHAPPILANGAD	16.10%	65.59%	1.17%	100.00%
FAMILY HEALTH CENTRE THILLENKERRY	16.23%	23.63%	8.95%	6.14%
FAMILY HEALTH CENTRE MOKERI	18.17%	96.73%	71.63%	83.10%
URBAN PRIMARY HEALTH CENTRE PANOOR	19.27%	51.84%	46.87%	85.42%
GENERAL HOSPITAL THALASSERY	19.85%	0.00%	0.00%	0.00%
TALUK HEAD QUARTERS HOSPITAL KUTHUPARAMBA	20.52%	0.00%	0.00%	0.00%
FAMILY HEALTH CENTRE THRIPRANGOTTUR	22.21%	97.50%	70.83%	83.09%
COMMUNITY HEALTH CENTRE MATTOOL	22.53%	95.19%	71.09%	42.19%
TALUK HOSPITAL PAYYANNUR	22.67%	0.00%	0.00%	0.00%
COMMUNITY HEALTH CENTRE PATTIAM	25.26%	63.82%	0.00%	0.00%
FAMILY HEALTH CENTRE KADIRUR	27.00%	95.93%	73.79%	91.86%
EK NAYANAR MEMORIAL GOVT WOMEN AND CHILDREN HOSPITAL MANGATTUPARAMBA	27.19%	64.98%	20.97%	98.91%
FAMILY HEALTH CENTRE KUNNOTHUPARAMBA	27.28%	26.18%	0.77%	24.35%
FAMILY HEALTH CENTRE MUNDERI	27.83%	99.49%	89.22%	96.82%
FAMILY HEALTH CENTRE PATTUVAM	28.49%	83.08%	79.74%	54.98%
URBAN PRIMARY HEALTH CENTRE MAITHANAPPALLY	30.86%	62.44%	52.87%	89.44%
FAMILY HEALTH CENTRE VALLITHODE	37.37%	89.46%	0.05%	33.45%
FAMILY HEALTH CENTRE KADANNAPPALLY	37.89%	89.41%	75.45%	20.00%
FAMILY HEALTH CENTRE KOTTIYOOR	38.03%	66.55%	64.92%	25.04%
FAMILY HEALTH CENTRE CHERUTHAZHAM	40.15%	98.03%	63.34%	53.65%
FAMILY HEALTH CENTRE NARATH	40.93%	71.03%	65.16%	85.39%
URBAN PRIMARY HEALTH CENTRE PORORA	43.22%	0.00%	0.00%	0.00%
FAMILY HEALTH CENTRE MORAZHA FISHERIES	43.56%	92.41%	85.31%	33.15%
FAMILY HEALTH CENTRE KANKOL ALAPPADAMBA	43.93%	87.77%	78.50%	56.32%
FAMILY HEALTH CENTRE KUTTIATTOOR	49.77%	89.13%	86.64%	94.23%
FAMILY HEALTH CENTRE ETTIKULAM	50.23%	99.07%	89.72%	65.15%
FAMILY HEALTH CENTRE PUTHIYANGADI FISHERIES	50.49%	100.00%	94.91%	0.00%
PRIMARY HEALTH CENTRE KURUMATHUR	51.09%	94.12%	91.88%	43.73%
FAMILY HEALTH CENTRE CHENGALAYI	51.62%	99.49%	91.74%	68.83%
FAMILY HEALTH CENTRE PULINGOME	52.56%	33.36%	35.55%	23.40%
FAMILY HEALTH CENTRE MALAPPATTAM	52.70%	95.63%	91.00%	100.00%
FAMILY HEALTH CENTRE CHERUKUNNU	53.13%	98.66%	77.44%	67.01%
FAMILY HEALTH CENTRE ANJARAKKANDY	56.15%	82.23%	80.31%	82.62%
FAMILY HEALTH CENTRE KUNHIMANGALAM	57.19%	86.45%	0.18%	78.72%
FAMILY HEALTH CENTRE ERAMAM KUTTUR	58.45%	92.00%	90.39%	40.74%
FAMILY HEALTH CENTRE VALAPATTANAM	68.27%	98.40%	90.14%	92.18%



Non - eHealth Institutions Started

District	VPN Institutions	Reception Started	Advance Appointment Started
THIRUVANANTHAPURAM	44	44	44
MALAPPURAM	38	36	36
ALAPPUZHA	30	28	28
THRISSUR	28	26	26
ERNAKULAM	27	23	23
KOLLAM	23	21	21
KOTTAYAM	23	23	23
KANNUR	16	14	14
PALAKKAD	16	15	15
KOZHIKODE	13	13	13
PATHANAMTHITTA	13	13	13
KASARAGOD	12	11	11
WAYANAD	11	11	11
IDUKKI	8	7	7
Total	302	285	285

4. Status of Modules Usage in Hospitals

District wise status of live institutions and the count of various modules [Reception, OP Consultation, Lab, Pharmacy] started / functional.

District	Live Institutions	Reception	Consultation	Pharmacy ordered by doctors	Lab ordered by doctors
THIRUVANANTHAPURAM	102	97 (95%)	90 (88%)	80 (78%)	82 (80%)
THRISSUR	72	66 (92%)	64 (89%)	63 (88%)	64 (89%)
MALAPPURAM	70	68 (97%)	67 (96%)	60 (86%)	59 (84%)
KOZHIKODE	73	71 (97%)	59 (81%)	54 (74%)	55 (75%)
ERNAKULAM	73	69 (95%)	60 (82%)	56 (77%)	53 (73%)
PALAKKAD	52	48 (92%)	47 (90%)	43 (83%)	41 (79%)
KANNUR	50	46 (92%)	39 (78%)	32 (64%)	34 (68%)
ALAPPUZHA	39	37 (95%)	37 (95%)	36 (92%)	33 (85%)
KOTTAYAM	43	41 (95%)	37 (86%)	33 (77%)	31 (72%)
KOLLAM	38	36 (95%)	33 (87%)	33 (87%)	30 (79%)
WAYANAD	26	26 (100%)	24 (92%)	23 (88%)	23 (88%)
IDUKKI	23	22 (96%)	21 (91%)	21 (91%)	21 (91%)
PATHANAMTHITTA	23	23 (100%)	19 (83%)	19 (83%)	20 (87%)
KASARAGOD	27	24 (89%)	20 (74%)	17 (63%)	16 (59%)
Total	711	674 (95%)	617 (87%)	570 (80%)	562 (79%)

The reception has started with at least 500 total visits, the OP module has started with at least 500 consultations, pharmacy orders by doctors are at least 100, and lab orders by doctors are at least 100.



5. Status of Modules Usage in Hospitals

District wise status of live institutions and the count of various modules [Reception, OP Consultation, Lab, Pharmacy] started / functional.

District	Live Institutions	Reception started	Consultation started	Pharmacy started	Billing started	Lab Started
IDUKKI	23	22	21	22	17	17
PATHANAMTHITTA	23	23	19	19	20	18
WAYANAD	26	26	24	24	23	22
KASARAGOD	27	24	20	21	15	15
KOLLAM	38	36	33	34	33	31
ALAPPUZHA	39	37	37	38	26	34
KOTTAYAM	43	41	37	36	28	24
KANNUR	50	46	39	34	33	29
PALAKKAD	52	48	47	43	40	35
MALAPPURAM	70	68	67	63	36	53
THRISSUR	72	66	64	63	62	64
ERNAKULAM	73	69	60	54	46	48
KOZHIKODE	73	71	59	55	58	51
THIRUVANANTHAPURAM	102	97	90	87	82	84
Total	711	674	617	593	519	525

6. 1 Online Appointment Booking in Hospitals (except Medical Colleges)

