

1. eHealth Kerala - Vital Statistics

Hospital Type	Live Institutions
Family Health Centre	55
Urban Health Wellness Centre	22
Urban Primary Health Centre	19
Community Health Centre	18
Primary Health Centre	10
Block Family Health Centre	5
Medical College Hospital	4
Taluk Headquarters Hospital	4
Taluk Hospital	3
District Hospital	2
General Hospital	2
Specialty Hospital	2
District TB Centre	1
Empanelled Diagnostic Centre	1
Government Dispensary	1
Public Health Laboratory	1
Specialty Hospital - Child Development	1
Specialty Hospital - Pulmonary Medicine	1
Specialty Hospital - Women Children	1
Total	153

2. Highlights



1. An increase in OP consultation was observed in November, with the percentage rising from 49.7% to 50.7%.

2. UHID visits increased by 1% during November, rising from 42% to 43%.

3. The percentage of lab orders placed by doctors increased by 2% in November, rising from 20% to 22%.

4. Pharmacy prescriptions increased by 1% during the month of November.

5. Thiruvananthapuram district tops the district-wise count of online appointments taken .The district ranked third in the district-wise percentage of online appointments taken up for OP visits, with nearly 1.58%.

6. Family Health Centre Veeranakavu has secured the top position in the eHealth institution-level ranking.



1. Thiruvananthapuram (TVM) district ranks 7th overall in eHealth service delivery among all DHS and NHM institutions, excluding institutions that offer only Reception/Advance Appointment services.

2. Mental Health Centre Peroorkada records the lowest UHID percentage among institutions.

3. CHC Poovar has the lowest consultation %,Pharmacy prescriptions% and Lab Orders by Doctors %.

2. eHealth - District Ranking Matrix Based on Performance of all Institutions (except Medical Colleges)

The ranking matrix showcases the performance of districts in providing eHealth services through all institutions (excluding Medical Colleges) based on six different parameters.

These parameters include:

1.

Percentage of institutions where the reception module is currently using (except institution started with VPN)
2.

Percentage of UHID Visits.
3.

Percentage of Doctor Consultations.
4.

Percentage of Pharmacy Prescriptions by doctors.
5.

Percentage of lab orders by doctors.
6.

Percentage of Live Institutions.

Weightage is assigned to the percentages calculated in intervals of 10. The rank is determined based on the sum of these weightages.

The top-performing districts should aim to maintain their positions, while the average and low-performing districts should strive to reach the 'top four' league.

The ranking matrix for the current month, November 2025, along with the previous two months, is provided in the table below.

District	September	October	November
IDUKKI	1	1	1
WAYANAD	2	2	2
ALAPPUZHA	5	4	3
MALAPPURAM	4	3	4
THRISSUR	5	3	4
PALAKKAD	3	4	5
KOLLAM	8	7	6
KOZHIKODE	4	5	6
THIRUVANANTHAPURAM	6	7	7
KASARAGOD	4	6	8
KOTTAYAM	8	7	8
PATHANAMTHITTA	7	7	8
KANNUR	10	8	9
ERNAKULAM	9	8	10

- Best performing
- Average performing
- Low performing

NB: Institutions started via VPN (Reception/Advanced Appointment started)are not considered in the rank and usage calculations.

3. eHealth - Institution Level Ranking (except Medical Colleges)

Hospital	Rank
FAMILY HEALTH CENTRE VEERANAKAVU	1
FAMILY HEALTH CENTRE AMBOORI	2
FAMILY HEALTH CENTRE KOLLAYIL	2
FAMILY HEALTH CENTRE MADAVOOR	2
FAMILY HEALTH CENTRE PERUMPAZHUTHOOR	2
FAMILY HEALTH CENTRE POOZHANAD	2
URBAN PRIMARY HEALTH CENTRE MAMBAZHAKKARA	2
FAMILY HEALTH CENTRE AMACHAL NEW	3
FAMILY HEALTH CENTRE KALLIKKAD NEW	3
FAMILY HEALTH CENTRE KUTTICHAL	3
URBAN PRIMARY HEALTH CENTRE CHALAI	3
FAMILY HEALTH CENTRE CHEMBOOR	4
FAMILY HEALTH CENTRE PARANIYAM	4
URBAN PRIMARY HEALTH CENTRE VATTIYOORKAVU	4
FAMILY HEALTH CENTRE ANAKUDY	5
FAMILY HEALTH CENTRE PANA VOOR	5
FAMILY HEALTH CENTRE POZHIOOR	5
FAMILY HEALTH CENTRE PULIMATH	5
FAMILY HEALTH CENTRE UZHAMALAKKAL	5
FAMILY HEALTH CENTRE VILAVOORKKAL	5
FAMILY HEALTH CENTRE BALARAMAPURAM	6
FAMILY HEALTH CENTRE KARAKULAM	6
PRIMARY HEALTH CENTRE VELLAYANI	6
URBAN PRIMARY HEALTH CENTRE THRIKKANNAPURAM	6
FAMILY HEALTH CENTRE KADAKAMPALLY	7
FAMILY HEALTH CENTRE KOTTUKAL	7
FAMILY HEALTH CENTRE KUNNATHUKAL	7
FAMILY HEALTH CENTRE MUKKOLA	7
FAMILY HEALTH CENTRE THONIPARA	7
PRIMARY HEALTH CENTRE AZHOOR	7
URBAN PRIMARY HEALTH CENTRE POOVATHOOR	7
COMMUNITY HEALTH CENTRE VELLARADA	8
FAMILY HEALTH CENTRE ARUVIKKARA	8
FAMILY HEALTH CENTRE MARANALLOOR	8
FAMILY HEALTH CENTRE THOLICODE	8
FAMILY HEALTH CENTRE VAMANAPURAM	8

Hospital	Rank
FAMILY HEALTH CENTRE VELI	32
PRIMARY HEALTH CENTRE KIZHUVILAM	31
FAMILY HEALTH CENTRE MANICKAL	30
INTEGRATED FAMILY HEALTH CENTRE PANGAPPARA	30
MENTAL HEALTH CENTRE PEROORKADA	29
TALUK HOSPITAL FORT THIRUVANANTHAPURAM	29
TALUK HEADQUARTERS HOSPITAL CHIRAYINKEEZH	28
COMMUNITY HEALTH CENTRE ANCHUTHENGU	27
COMMUNITY HEALTH CENTRE KANYAKULANGARA	27
COMMUNITY HEALTH CENTRE POOVAR	27
DISTRICT HOSPITAL NEDUMANGAD	27
GENERAL HOSPITAL THIRUVANANTHAPURAM	27
SECRETARIAT HEALTH CENTRE THIRUVANANTHAPURAM	27
COMMUNITY HEALTH CENTRE VELLANAD	26
COMMUNITY HEALTH CENTRE VILAPPIL	26
DISTRICT MODEL HOSPITAL PEROORKADA	26
TALUK HOSPITAL NEMOM	26
WOMEN AND CHILDREN HOSPITAL THYCAUD	25
CHEST DISEASES HOSPITAL PULAYANARKOTTAH	24
COMMUNITY HEALTH CENTRE PULLUVILA	24
COMMUNITY HEALTH CENTRE PUTHENTHOPE	24
COMMUNITY HEALTH CENTRE KALLARA	23
FAMILY HEALTH CENTRE POONTHURA	23
GENERAL HOSPITAL NEYYATTINKARA	23
TALUK HEADQUARTERS HOSPITAL VARKALA	23
TALUK HOSPITAL VITHURA	23
COMMUNITY HEALTH CENTRE PALODE	22
COMMUNITY HEALTH CENTRE ARYANAD	21
FAMILY HEALTH CENTRE KATTAKADA	21
FAMILY HEALTH CENTRE KEEZHATTINGAL	21
FAMILY HEALTH CENTRE PERINGAMMALA	20
URBAN HEALTH CENTRE MANNANTHALA	20
URBAN PRIMARY HEALTH CENTRE MUTTADA	20
COMMUNITY HEALTH CENTRE KESAVAPURAM	19
DISTRICT TB CENTRE THIRUVANANTHAPURAM	19

3.1 eHealth Performance - Reception Module

Reception Module is considered to be functional in an institution only if the number of total visits for the month is of minimum 500.

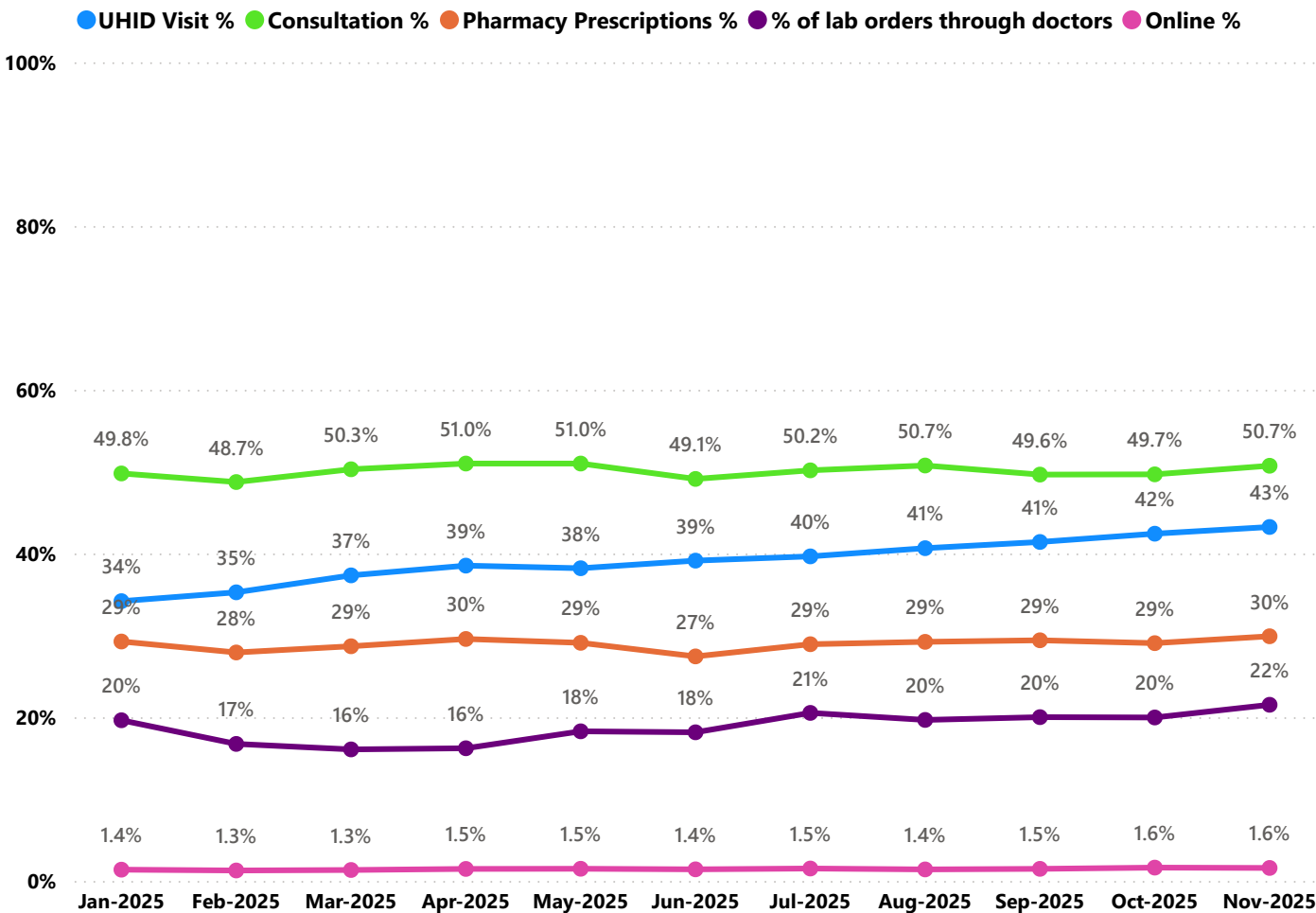
District	Institution Count	Institutions with Reception	% of institutions with Reception
THIRUVANANTHAPURAM	119	97	81.51%
ERNAKULAM	88	69	78.41%
MALAPPURAM	87	68	78.16%
THRISSUR	81	66	81.48%
KOZHIKODE	80	71	88.75%
PALAKKAD	61	48	78.69%
KANNUR	60	46	76.67%
ALAPPUZHA	54	38	70.37%
KOLLAM	50	37	74.00%
KOTTAYAM	45	41	91.11%
KASARAGOD	35	24	68.57%
WAYANAD	33	27	81.82%
PATHANAMTHITTA	32	25	78.12%
IDUKKI	27	22	81.48%

Institutions where the reception module is either not started or not using

Hospital Name

FAMILY HEALTH CENTRE MANICKAL
FAMILY HEALTH CENTRE VELI
INTEGRATED FAMILY HEALTH CENTRE PANGAPPARA
PRIMARY HEALTH CENTRE KIZHUVILAM
URBAN HEALTH CENTRE MANNANTHALA

3.2 e-Health Performance Trend



- UHID Visit % is calculated as $(UHID\ Visits / Total\ Visit) \times 100$
- Consultation % is calculated as $(Doctor\ Consultation / OP\ Visits) \times 100$
- Pharmacy % is calculated as $(Pharmacy\ Prescriptions / Total\ OP\ Visits) \times 100$
- Lab % is calculated as $(Lab\ orders\ given\ by\ doctors / Total\ Lab\ Orders) \times 100$
- Online % is calculated as $(Online\ appointments\ via\ web\ portal / Total\ OP\ Visits) \times 100$

3.3 e-Health Performance Indicators

Hospital	UHID Visit %	Consultation %	Pharmacy orders by doctors %	% of Lab Orders given by Doctors
FAMILY HEALTH CENTRE ANAKUDY	96.47%	97.20%	93.06%	26.71%
FAMILY HEALTH CENTRE PERUMPAZHUTHOOR	85.39%	92.30%	73.07%	84.46%
FAMILY HEALTH CENTRE PULLAMPARA	84.08%	53.13%	30.39%	29.34%
FAMILY HEALTH CENTRE PULIMATH	83.07%	91.18%	88.50%	49.00%
FAMILY HEALTH CENTRE KOLLAYIL	80.54%	99.42%	87.17%	70.35%
FAMILY HEALTH CENTRE VEMBAYAM	76.02%	98.73%	89.96%	24.81%
FAMILY HEALTH CENTRE VEERANAKAVU	75.12%	95.07%	100.00%	92.53%
URBAN PRIMARY HEALTH CENTRE MAMBAZHAKKARA	73.11%	97.52%	70.10%	99.11%
FAMILY HEALTH CENTRE KOTTUKAL	72.87%	99.95%	86.91%	37.88%
FAMILY HEALTH CENTRE PARASUVAIKKAL PARASALA	72.62%	99.73%	94.14%	0.00%
FAMILY HEALTH CENTRE THONIPARA	69.13%	91.98%	83.29%	49.17%
FAMILY HEALTH CENTRE BALARAMAPURAM	67.98%	96.88%	64.91%	78.51%
URBAN PRIMARY HEALTH CENTRE CHALAI	67.14%	99.23%	79.94%	100.00%
FAMILY HEALTH CENTRE KALLIKKAD NEW	65.93%	96.85%	89.21%	88.04%
URBAN PRIMARY HEALTH CENTRE THRIKKANNAPURAM	65.46%	88.50%	59.61%	97.06%
FAMILY HEALTH CENTRE AMBOORI	65.37%	93.31%	85.59%	98.06%
FAMILY HEALTH CENTRE PERINGAMMALA	65.31%	62.28%	6.90%	8.64%
FAMILY HEALTH CENTRE VILAVOORKKAL	64.72%	97.50%	81.25%	65.97%
FAMILY HEALTH CENTRE UZHAMALAKKAL	64.43%	83.57%	77.41%	87.86%
FAMILY HEALTH CENTRE POOZHANAD	64.26%	99.76%	88.50%	96.21%
FAMILY HEALTH CENTRE MALAYADI	64.23%	98.46%	59.21%	18.52%
FAMILY HEALTH CENTRE CHERUNNIYOOR	64.20%	47.54%	40.21%	100.00%
FAMILY HEALTH CENTRE THOLICODE	63.75%	89.65%	77.45%	54.11%
FAMILY HEALTH CENTRE ARUVIKKARA	63.26%	95.09%	57.59%	60.98%
FAMILY HEALTH CENTRE MARANALLOOR	63.15%	91.99%	81.10%	30.94%
FAMILY HEALTH CENTRE CHEMMARUTHY	62.97%	80.29%	47.81%	11.23%
FAMILY HEALTH CENTRE VETTOOR	62.97%	63.70%	28.77%	34.73%
FAMILY HEALTH CENTRE CHEMBOOR	62.95%	99.09%	76.93%	88.30%
FAMILY HEALTH CENTRE EDAVA	62.33%	89.90%	85.81%	34.18%
FAMILY HEALTH CENTRE KARAVARAM	61.77%	90.95%	72.41%	33.47%
FAMILY HEALTH CENTRE AMACHAL NEW	61.45%	99.96%	74.38%	90.60%
FAMILY HEALTH CENTRE MADAVOOR	60.34%	98.65%	87.75%	100.00%
URBAN PRIMARY HEALTH CENTRE VATTIYOORKAVU	60.32%	80.99%	78.12%	100.00%
FAMILY HEALTH CENTRE CHENKAL	60.13%	96.72%	85.76%	0.00%
PRIMARY HEALTH CENTRE AZHOOR	59.99%	71.01%	69.40%	100.00%
FAMILY HEALTH CENTRE PANAVOOR	59.70%	92.45%	86.00%	79.78%
FAMILY HEALTH CENTRE VAMANAPURAM	59.47%	96.51%	59.68%	73.04%
FAMILY HEALTH CENTRE KUTTICAL	56.78%	99.22%	81.38%	92.25%
COMMUNITY HEALTH CENTRE ANDOORKONAM	56.57%	96.95%	60.82%	55.25%
COMMUNITY HEALTH CENTRE PALLICKAL	56.07%	88.95%	53.64%	43.78%
COMMUNITY HEALTH CENTRE VELLARADA	55.69%	89.42%	62.18%	78.76%

3.3 e-Health Performance Indicators

Hospital	UHID Visit %	Consultation %	Pharmacy ordered by doctors %	% of Lab Orders given by Doctors
MENTAL HEALTH CENTRE PEROORKADA	2.55%	19.29%	0.25%	0.00%
FAMILY HEALTH CENTRE POONTHURA	10.70%	67.91%	11.53%	6.90%
FAMILY HEALTH CENTRE PUTHUKURICHY	11.80%	91.68%	58.15%	43.62%
TALUK HOSPITAL FORT THIRUVANANTHAPURAM	19.15%	0.00%	0.00%	0.00%
COASTAL SPECIALITY HOSPITAL VALIYATHURA	20.08%	84.14%	37.91%	39.94%
DISTRICT HOSPITAL NEDUMANGAD	21.36%	10.68%	0.00%	0.00%
TALUK HEADQUARTERS HOSPITAL CHIRAYINKEEZH	21.72%	0.00%	0.00%	0.00%
COMMUNITY HEALTH CENTRE PUTHENTHOPE	23.98%	49.35%	13.40%	0.19%
PRIMARY HEALTH CENTRE BHARATHANNOOR	25.95%	22.87%	0.00%	100.00%
TALUK HOSPITAL NEMOM	26.27%	24.98%	13.61%	7.07%
FAMILY HEALTH CENTRE JAGATHY	28.41%	98.74%	83.06%	46.75%
COMMUNITY HEALTH CENTRE VELLANAD	29.01%	7.52%	4.16%	32.65%
TALUK HEADQUARTERS HOSPITAL VARKALA	30.77%	51.71%	3.68%	6.11%
COMMUNITY HEALTH CENTRE IRANIMUTTOM	31.34%	73.78%	54.07%	30.21%
COMMUNITY HEALTH CENTRE ANCHUTHENGU	32.79%	0.00%	0.00%	0.00%
DISTRICT MODEL HOSPITAL PEROORKADA	32.89%	25.98%	9.30%	0.20%
FAMILY HEALTH CENTRE KADAKAMPALLY	33.14%	99.03%	86.99%	77.40%
COMMUNITY HEALTH CENTRE KANYAKULANGARA	33.46%	5.33%	0.77%	0.33%
DISTRICT TB CENTRE THIRUVANANTHAPURAM	33.67%	86.15%	23.67%	0.00%
FAMILY HEALTH CENTRE THONNAKKAL	33.73%	98.86%	81.51%	58.12%
COMMUNITY HEALTH CENTRE PULLUVILA	34.16%	21.56%	10.32%	12.97%
WOMEN AND CHILDREN HOSPITAL THYCAUD	36.84%	36.78%	2.10%	5.70%
COMMUNITY HEALTH CENTRE KESAVAPURAM	37.18%	70.62%	12.87%	22.63%
GENERAL HOSPITAL THIRUVANANTHAPURAM	37.32%	8.80%	2.39%	0.20%
SECRETARIAT HEALTH CENTRE THIRUVANANTHAPURAM	37.57%	0.00%	0.00%	0.00%
COMMUNITY HEALTH CENTRE POOVAR	38.03%	1.06%	0.24%	0.83%
FAMILY HEALTH CENTRE PERUMATHURA	39.41%	90.95%	69.24%	40.86%
FAMILY HEALTH CENTRE VATTIYOORKAVU	40.82%	84.51%	74.81%	44.35%
FAMILY HEALTH CENTRE MANGALAPURAM	42.02%	65.52%	55.25%	28.03%
COMMUNITY HEALTH CENTRE MANAMBOOR	42.57%	39.09%	34.06%	96.25%
COMMUNITY HEALTH CENTRE PALODE	43.22%	53.90%	1.63%	0.00%
FAMILY HEALTH CENTRE KULATHOOR	44.67%	72.64%	48.72%	64.00%
FAMILY HEALTH CENTRE PALLICHAL	45.57%	59.22%	46.94%	27.53%
FAMILY HEALTH CENTRE KARAKULAM	46.26%	95.20%	69.76%	91.87%
PRIMARY HEALTH CENTRE KALLIYOOR	46.98%	88.73%	81.77%	65.05%
COMMUNITY HEALTH CENTRE VILAPPIL	47.94%	13.22%	5.15%	8.14%
FAMILY HEALTH CENTRE MUDAKKAL	48.45%	74.57%	0.44%	23.76%
COMMUNITY HEALTH CENTRE PERUMKADAVILA	48.55%	95.07%	58.11%	36.53%
PRIMARY HEALTH CENTRE VELLAYANI	48.59%	99.70%	87.61%	79.55%
COMMUNITY HEALTH CENTRE KALLARA	48.65%	35.51%	15.85%	0.52%
FAMILY HEALTH CENTRE KILIMANOOR	49.18%	94.62%	79.27%	41.55%
TALUK HOSPITAL VITHURA	49.25%	30.06%	12.81%	7.23%



Non - eHealth Institutions Started

District	VPN Institutions	Reception Started	Advance Appointment Started
THIRUVANANTHAPURAM	44	44	44
MALAPPURAM	38	36	36
ALAPPUZHA	30	28	28
THRISSUR	28	26	26
ERNAKULAM	27	23	23
KOLLAM	23	21	21
KOTTAYAM	23	23	23
KANNUR	16	14	14
PALAKKAD	16	15	15
KOZHIKODE	13	13	13
PATHANAMTHITTA	13	13	13
KASARAGOD	12	11	11
WAYANAD	11	11	11
IDUKKI	8	7	7
Total	302	285	285

4. Status of Modules Usage in Hospitals

District wise status of live institutions and the count of various modules [Reception, OP Consultation, Lab, Pharmacy] started / functional.

District	Live Institutions	Reception	Consultation	Pharmacy ordered by doctors	Lab ordered by doctors
THIRUVANANTHAPURAM	102	97 (95%)	90 (88%)	80 (78%)	82 (80%)
ERNAKULAM	73	69 (95%)	60 (82%)	56 (77%)	53 (73%)
KOZHIKODE	73	71 (97%)	59 (81%)	54 (74%)	55 (75%)
THRISSUR	72	66 (92%)	64 (89%)	63 (88%)	64 (89%)
MALAPPURAM	70	68 (97%)	67 (96%)	60 (86%)	59 (84%)
PALAKKAD	52	48 (92%)	47 (90%)	43 (83%)	41 (79%)
KANNUR	50	46 (92%)	39 (78%)	32 (64%)	34 (68%)
KOTTAYAM	43	41 (95%)	37 (86%)	33 (77%)	31 (72%)
ALAPPUZHA	39	37 (95%)	37 (95%)	36 (92%)	33 (85%)
KOLLAM	38	36 (95%)	33 (87%)	33 (87%)	30 (79%)
KASARAGOD	27	24 (89%)	20 (74%)	17 (63%)	16 (59%)
WAYANAD	26	26 (100%)	24 (92%)	23 (88%)	23 (88%)
IDUKKI	23	22 (96%)	21 (91%)	21 (91%)	21 (91%)
PATHANAMTHITTA	23	23 (100%)	19 (83%)	19 (83%)	20 (87%)
Total	711	674 (95%)	617 (87%)	570 (80%)	562 (79%)

The reception has started with at least 500 total visits, the OP module has started with at least 500 consultations, pharmacy orders by doctors are at least 100, and lab orders by doctors are at least 100.



5. Status of Modules Usage in Hospitals

District wise status of live institutions and the count of various modules [Reception, OP Consultation, Lab, Pharmacy] started / functional.

District	Live Institutions	Reception started	Consultation started	Pharmacy started	Billing started	Lab Started
IDUKKI	23	22	21	22	17	17
PATHANAMTHITTA	23	23	19	19	20	18
WAYANAD	26	26	24	24	23	22
KASARAGOD	27	24	20	21	15	15
KOLLAM	38	36	33	34	33	31
ALAPPUZHA	39	37	37	38	26	34
KOTTAYAM	43	41	37	36	28	24
KANNUR	50	46	39	34	33	29
PALAKKAD	52	48	47	43	40	35
MALAPPURAM	70	68	67	63	36	53
THRISSUR	72	66	64	63	62	64
ERNAKULAM	73	69	60	54	46	48
KOZHIKODE	73	71	59	55	58	51
THIRUVANANTHAPURAM	102	97	90	87	82	84
Total	711	674	617	593	519	525

6. 1 Online Appointment Booking in Hospitals (except Medical Colleges)

