

1. eHealth Kerala - Vital Statistics

Hospital Type	Live Institutions
Family Health Centre	17
Primary Health Centre	6
Community Health Centre	5
Urban Health Wellness Centre	4
Taluk Headquarters Hospital	2
Urban Primary Health Centre	2
General Hospital	1
Medical College Hospital	1
Total	38

2. Highlights



1. Wayanad (WYD) district remains 2nd in the overall eHealth service delivery among all DHS and NHM institutions, excluding institutions that offer only Reception/Advance Appointment services.

2. UHID Visits remained unchanged in November compared to the previous month.

3. OP Consultation remained unchanged in November compared to the previous month.

4. Family Health Centre Kottathara has secured the top position in the eHealth institution-level ranking.



1. The district has the least position in the district-wise percentage of online appointments taken up for OP visits, with nearly 0.1%.

2. CHC Pulpally records the lowest UHID percentage among institutions.

3. PHC Mullankolly has the lowest Pharmacy prescriptions% and Lab Orders by Doctors %.

4. Pharmacy Prescriptions reduced from 68% to 67% in November, marking a 1% decline.

5. Lab orders placed by doctors reduced from 68% to 67% in November, marking a 1% decline.

2. eHealth - District Ranking Matrix Based on Performance of all Institutions (except Medical Colleges)

The ranking matrix showcases the performance of districts in providing eHealth services through all institutions (excluding Medical Colleges) based on six different parameters.

These parameters include:

1.

Percentage of institutions where the reception module is currently using (except institution started with VPN)
2.

Percentage of UHID Visits.
3.

Percentage of Doctor Consultations.
4.

Percentage of Pharmacy Prescriptions by doctors.
5.

Percentage of lab orders by doctors.
6.

Percentage of Live Institutions.

Weightage is assigned to the percentages calculated in intervals of 10. The rank is determined based on the sum of these weightages.

The top-performing districts should aim to maintain their positions, while the average and low-performing districts should strive to reach the 'top four' league.

The ranking matrix for the current month, November 2025, along with the previous two months, is provided in the table below.

District	September	October	November
IDUKKI	1	1	1
WAYANAD	2	2	2
ALAPPUZHA	5	4	3
MALAPPURAM	4	3	4
THRISSUR	5	3	4
PALAKKAD	3	4	5
KOLLAM	8	7	6
KOZHIKODE	4	5	6
THIRUVANANTHAPURAM	6	7	7
KASARAGOD	4	6	8
KOTTAYAM	8	7	8
PATHANAMTHITTA	7	7	8
KANNUR	10	8	9
ERNAKULAM	9	8	10

- Best performing
- Average performing
- Low performing

NB: Institutions started via VPN (Reception/Advanced Appointment started)are not considered in the rank and usage calculations.

3. eHealth - Institution Level Ranking (except Medical Colleges)

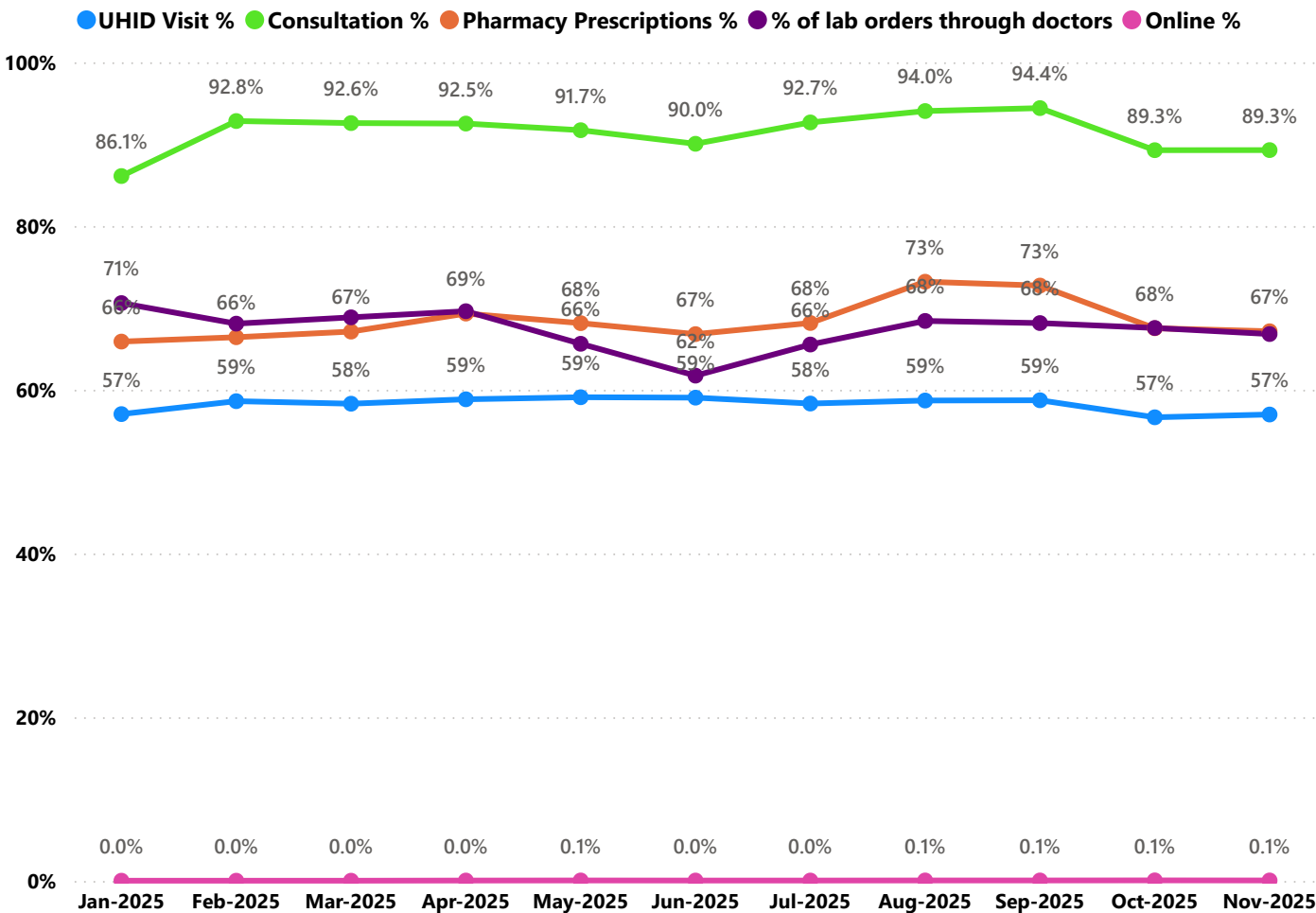
Hospital	Rank
FAMILY HEALTH CENTRE KOTTATHARA	1
FAMILY HEALTH CENTRE POZHUTHANA	1
FAMILY HEALTH CENTRE VARADOOR	1
FAMILY HEALTH CENTER NOOLPUZHA	2
FAMILY HEALTH CENTRE CHETHALAYAM	2
FAMILY HEALTH CENTRE EDAVAKA	2
FAMILY HEALTH CENTRE PADINJARATHARA	2
FAMILY HEALTH CENTRE POOTHADI	2
FAMILY HEALTH CENTRE THONDERNAD	2
FAMILY HEALTH CENTRE VENGAPALLY	2
FAMILY HEALTH CENTRE BEGUR	3
FAMILY HEALTH CENTRE CHULLIODE	3
FAMILY HEALTH CENTRE VAZHAVATTA	3
PRIMARY HEALTH CENTRE KAPPUKUNNU	3
URBAN PRIMARY HEALTH CENTRE MUNDERI	3
COMMUNITY HEALTH CENTRE PANAMARAM	4
COMMUNITY HEALTH CENTRE THARIODE	4
FAMILY HEALTH CENTRE AMBALAVAYAL	5
FAMILY HEALTH CENTRE APPAPARA	5
FAMILY HEALTH CENTRE VELLAMUNDA	5
FAMILY HEALTH CENTRE CHEERAL	6
FAMILY HEALTH CENTRE MEPPADY	7
PRIMARY HEALTH CENTRE MULLANKOLLY	8
M S PADMAIAH GOWDER MEMORIAL GOVERNMENT GENERAL HOSPITAL KALPETTA	9
FAMILY HEALTH CENTRE KURUKKANMOOLA	10
COMMUNITY HEALTH CENTRE PULPALLY	11

3.1 eHealth Performance - Reception Module

Reception Module is considered to be functional in an institution only if the number of total visits for the month is of minimum 500.

District	Institution Count	Institutions with Reception	% of institutions with Reception
THIRUVANANTHAPURAM	119	97	81.51%
ERNAKULAM	88	69	78.41%
MALAPPURAM	87	68	78.16%
THRISSUR	81	66	81.48%
KOZHIKODE	80	71	88.75%
PALAKKAD	61	48	78.69%
KANNUR	60	46	76.67%
ALAPPUZHA	54	38	70.37%
KOLLAM	50	37	74.00%
KOTTAYAM	45	41	91.11%
KASARAGOD	35	24	68.57%
WAYANAD	33	27	81.82%
PATHANAMTHITTA	32	25	78.12%
IDUKKI	27	22	81.48%

3.2 e-Health Performance Trend



- UHID Visit % is calculated as $(UHID\ Visits / Total\ Visit) * 100$
- Consultation % is calculated as $(Doctor\ Consultation / OP\ Visits) * 100$
- Pharmacy % is calculated as $(Pharmacy\ Prescriptions / Total\ OP\ Visits) * 100$
- Lab % is calculated as $(Lab\ orders\ given\ by\ doctors / Total\ Lab\ Orders) * 100$
- Online % is calculated as $(Online\ appointments\ via\ web\ portal / Total\ OP\ Visits) * 100$

3.3 e-Health Performance Indicators

Hospital	UHID Visit %	Consultation %	Pharmacy orders by doctors %	% of Lab Orders given by Doctors
FAMILY HEALTH CENTRE KURUKKANMOOLA	33.39%	0.00%	0.00%	0.00%
COMMUNITY HEALTH CENTRE PULPALLY	5.20%	0.00%	0.00%	0.00%
PRIMARY HEALTH CENTRE MULLANKOLLY	87.81%	98.97%	12.65%	15.11%
M S PADMAIAH GOWDER MEMORIAL GOVERNMENT GENERAL HOSPITAL KALPETTA	37.76%	88.82%	30.82%	35.61%
FAMILY HEALTH CENTRE CHEERAL	78.02%	98.47%	83.42%	59.76%
FAMILY HEALTH CENTRE MEPPADY	61.57%	94.64%	55.45%	61.66%
PRIMARY HEALTH CENTRE KAPPUKUNNU	74.17%	98.38%	94.84%	74.57%
FAMILY HEALTH CENTRE VELLAMUNDA	58.27%	100.00%	91.59%	79.87%
FAMILY HEALTH CENTRE AMBALAVAYAL	59.95%	97.64%	87.45%	81.66%
FAMILY HEALTH CENTER NOOLPUZHA	86.02%	97.92%	83.11%	83.01%
COMMUNITY HEALTH CENTRE PANAMARAM	62.24%	98.90%	85.54%	85.83%
COMMUNITY HEALTH CENTRE THARIODE	68.57%	95.03%	86.24%	87.01%
FAMILY HEALTH CENTRE POZHUTHANA	81.89%	99.88%	91.48%	87.11%
FAMILY HEALTH CENTRE CHULLIODE	61.06%	99.68%	94.74%	87.46%
FAMILY HEALTH CENTRE PADINJARATHARA	76.93%	99.54%	96.26%	89.22%
FAMILY HEALTH CENTRE VENGAPALLY	76.68%	99.85%	91.74%	89.26%
FAMILY HEALTH CENTRE EDAVAKA	60.55%	99.78%	91.77%	90.25%
FAMILY HEALTH CENTRE CHETHALAYAM	78.44%	99.81%	89.45%	90.27%
FAMILY HEALTH CENTRE THONDERNAD	65.34%	99.38%	90.76%	92.36%
FAMILY HEALTH CENTRE VAZHAVATTA	63.89%	97.49%	89.61%	93.10%
FAMILY HEALTH CENTRE POOTHADI	78.08%	99.96%	88.69%	93.54%
FAMILY HEALTH CENTRE BEGUR	61.08%	99.18%	88.52%	96.87%
FAMILY HEALTH CENTRE VARADOOR	75.86%	100.00%	90.72%	97.19%
URBAN PRIMARY HEALTH CENTRE MUNDERI	65.41%	97.54%	89.39%	97.35%
FAMILY HEALTH CENTRE APPAPARA	59.12%	98.82%	78.98%	99.44%
FAMILY HEALTH CENTRE KOTTATHARA	71.16%	99.58%	94.76%	100.00%



Non - eHealth Institutions Started

District	VPN Institutions	Reception Started	Advance Appointment Started
THIRUVANANTHAPURAM	44	44	44
MALAPPURAM	38	36	36
ALAPPUZHA	30	28	28
THRISSUR	28	26	26
ERNAKULAM	27	23	23
KOLLAM	23	21	21
KOTTAYAM	23	23	23
KANNUR	16	14	14
PALAKKAD	16	15	15
KOZHIKODE	13	13	13
PATHANAMTHITTA	13	13	13
KASARAGOD	12	11	11
WAYANAD	11	11	11
IDUKKI	8	7	7
Total	302	285	285

4. Status of Modules Usage in Hospitals

District wise status of live institutions and the count of various modules [Reception, OP Consultation, Lab, Pharmacy] started / functional.

District	Live Institutions	Reception	Consultation	Pharmacy ordered by doctors	Lab ordered by doctors
THIRUVANANTHAPURAM	102	97 (95%)	90 (88%)	80 (78%)	82 (80%)
THRISSUR	72	66 (92%)	64 (89%)	63 (88%)	64 (89%)
MALAPPURAM	70	68 (97%)	67 (96%)	60 (86%)	59 (84%)
ERNAKULAM	73	69 (95%)	60 (82%)	56 (77%)	53 (73%)
KOZHIKODE	73	71 (97%)	59 (81%)	54 (74%)	55 (75%)
PALAKKAD	52	48 (92%)	47 (90%)	43 (83%)	41 (79%)
ALAPPUZHA	39	37 (95%)	37 (95%)	36 (92%)	33 (85%)
KOLLAM	38	36 (95%)	33 (87%)	33 (87%)	30 (79%)
KOTTAYAM	43	41 (95%)	37 (86%)	33 (77%)	31 (72%)
KANNUR	50	46 (92%)	39 (78%)	32 (64%)	34 (68%)
WAYANAD	26	26 (100%)	24 (92%)	23 (88%)	23 (88%)
IDUKKI	23	22 (96%)	21 (91%)	21 (91%)	21 (91%)
PATHANAMTHITTA	23	23 (100%)	19 (83%)	19 (83%)	20 (87%)
KASARAGOD	27	24 (89%)	20 (74%)	17 (63%)	16 (59%)
Total	711	674 (95%)	617 (87%)	570 (80%)	562 (79%)

The reception has started with at least 500 total visits, the OP module has started with at least 500 consultations, pharmacy orders by doctors are at least 100, and lab orders by doctors are at least 100.



5. Status of Modules Usage in Hospitals

District wise status of live institutions and the count of various modules
[Reception, OP Consultation, Lab, Pharmacy] started / functional.

District	Live Institutions	Reception started	Consultation started	Pharmacy started	Billing started	Lab Started
IDUKKI	23	22	21	22	17	17
PATHANAMTHITTA	23	23	19	19	20	18
WAYANAD	26	26	24	24	23	22
KASARAGOD	27	24	20	21	15	15
KOLLAM	38	36	33	34	33	31
ALAPPUZHA	39	37	37	38	26	34
KOTTAYAM	43	41	37	36	28	24
KANNUR	50	46	39	34	33	29
PALAKKAD	52	48	47	43	40	35
MALAPPURAM	70	68	67	63	36	53
THRISSUR	72	66	64	63	62	64
ERNAKULAM	73	69	60	54	46	48
KOZHIKODE	73	71	59	55	58	51
THIRUVANANTHAPURAM	102	97	90	87	82	84
Total	711	674	617	593	519	525

6. 1 Online Appointment Booking in Hospitals (except Medical Colleges)

