

1. eHealth Kerala - Vital Statistics

Hospital Type	Live Institutions
Family Health Centre	55
Urban Primary Health Centre	19
Community Health Centre	18
Urban Health Wellness Centre	16
Primary Health Centre	9
Block Family Health Centre	5
Medical College Hospital	4
Taluk Headquarters Hospital	4
Taluk Hospital	3
District Hospital	2
General Hospital	2
Specialty Hospital	2
District TB Centre	1
Empanelled Diagnostic Centre	1
Government Dispensary	1
Public Health Laboratory	1
Specialty Hospital - Child Development	1
Specialty Hospital - Pulmonary Medicine	1
Specialty Hospital - Women Children	1
Total	146

2. eHealth - District Ranking Matrix Based on Performance of all Institutions (except Medical Colleges)

The ranking matrix showcases the performance of districts in providing eHealth services through all institutions (excluding Medical Colleges) based on six different parameters.

These parameters include:

1. Percentage of institutions where the reception module is currently using (except institution started with VPN)

2. Percentage of UHID Visits.

3. Percentage of Doctor Consultations.

4. Percentage of Pharmacy Prescriptions by doctors.

5. Percentage of lab orders by doctors.

6. Percentage of Live Institutions.

Weightage is assigned to the percentages calculated in intervals of 10. The rank is determined based on the sum of these weightages.

The top-performing districts should aim to maintain their positions, while the average and low-performing districts should strive to reach the 'top four' league.

The ranking matrix for the current month, October 2025, along with the previous two months, is provided in the table below.

District	August	September	October
IDUKKI	1	1	1
WAYANAD	2	2	2
MALAPPURAM	6	4	3
THRISSUR	4	5	3
ALAPPUZHA	5	5	4
PALAKKAD	3	3	4
KOZHIKODE	7	4	5
KASARAGOD	8	4	6
KOLLAM	10	8	7
KOTTAYAM	9	8	7
PATHANAMTHITTA	11	7	7
THIRUVANANTHAPURAM	9	6	7
ERNAKULAM	12	9	8
KANNUR	9	10	8

- Best performing
- Average performing
- Low performing

NB: Institutions started via VPN (Reception/Advanced Appointment started)are not considered in the rank and usage calculations.

3. eHealth - Institution Level Ranking (except Medical Colleges)

Hospital	Rank
FAMILY HEALTH CENTRE VEERANAKAVU	1
FAMILY HEALTH CENTRE KALLIKKAD NEW	2
FAMILY HEALTH CENTRE POOZHANAD	2
URBAN PRIMARY HEALTH CENTRE CHALAI	2
URBAN PRIMARY HEALTH CENTRE MAMBAZHAKKARA	2
URBAN PRIMARY HEALTH CENTRE THRIKKANNAPURAM	2
FAMILY HEALTH CENTRE AMACHAL NEW	3
FAMILY HEALTH CENTRE CHEMBOOR	3
FAMILY HEALTH CENTRE KOLLAYIL	3
FAMILY HEALTH CENTRE KUTTICHAL	3
FAMILY HEALTH CENTRE MADAVOOR	3
FAMILY HEALTH CENTRE PERUMPAZHUTHOOR	3
FAMILY HEALTH CENTRE AMBOORI	4
FAMILY HEALTH CENTRE PARANIYAM	4
FAMILY HEALTH CENTRE ANAKUDY	5
FAMILY HEALTH CENTRE KARAKULAM	5
FAMILY HEALTH CENTRE VILAVOORKKAL	5
PRIMARY HEALTH CENTRE VELLAYANI	5
COMMUNITY HEALTH CENTRE VELLARADA	6
FAMILY HEALTH CENTRE BALARAMAPURAM	6
FAMILY HEALTH CENTRE PANA VOOR	6
FAMILY HEALTH CENTRE PULIMATH	6
FAMILY HEALTH CENTRE THONIPARA	6
FAMILY HEALTH CENTRE UZHAMALAKKAL	6
URBAN PRIMARY HEALTH CENTRE POOVATHOOR	6
URBAN PRIMARY HEALTH CENTRE VATTIYOORKAVU	6
FAMILY HEALTH CENTRE KOTTUKAL	7
FAMILY HEALTH CENTRE POZHIOOR	7
COMMUNITY HEALTH CENTRE ANDOORKONAM	8
FAMILY HEALTH CENTRE CHERUNNIYOOR	8
FAMILY HEALTH CENTRE KADAKAMPALLY	8
FAMILY HEALTH CENTRE KUNNATHUKAL	8
FAMILY HEALTH CENTRE MUKKOLA	8
FAMILY HEALTH CENTRE THOLICODE	8
FAMILY HEALTH CENTRE VAMANAPURAM	8
FAMILY HEALTH CENTRE VEMBAYAM	8

Hospital	Rank
FAMILY HEALTH CENTRE MANICKAL	34
FAMILY HEALTH CENTRE VELI	34
PRIMARY HEALTH CENTRE KIZHUVILAM	33
COMMUNITY HEALTH CENTRE ANCHUTHENGU	32
COMMUNITY HEALTH CENTRE VELLANAD	31
INTEGRATED FAMILY HEALTH CENTRE PANGAPPARA	31
MENTAL HEALTH CENTRE PEROORKADA	30
TALUK HEADQUARTERS HOSPITAL CHIRAYINKEEZH	30
TALUK HOSPITAL FORT THIRUVANANTHAPURAM	30
COMMUNITY HEALTH CENTRE KANYAKULANGARA	29
DISTRICT HOSPITAL NEDUMANGAD	29
GENERAL HOSPITAL THIRUVANANTHAPURAM	29
SECRETARIAT HEALTH CENTRE THIRUVANANTHAPURAM	29
COMMUNITY HEALTH CENTRE POOVAR	28
COMMUNITY HEALTH CENTRE VILAPPIL	27
DISTRICT MODEL HOSPITAL PEROORKADA	27
TALUK HOSPITAL NEMOM	27
COMMUNITY HEALTH CENTRE PULLUVILA	26
COMMUNITY HEALTH CENTRE PUTHENTHOPE	26
WOMEN AND CHILDREN HOSPITAL THYCAUD	26
CHEST DISEASES HOSPITAL PULAYANARKOTTAH	25
COMMUNITY HEALTH CENTRE KALLARA	25
TALUK HEADQUARTERS HOSPITAL VARKALA	25
TALUK HOSPITAL VITHURA	25
URBAN HEALTH CENTRE MANNANTHALA	25
FAMILY HEALTH CENTRE KEEZHATTINGAL	24
GENERAL HOSPITAL NEYYATTINKARA	24
COMMUNITY HEALTH CENTRE PALODE	23
FAMILY HEALTH CENTRE PERINGAMMALA	23
COMMUNITY HEALTH CENTRE ARYANAD	22
FAMILY HEALTH CENTRE POONTHURA	22
URBAN PRIMARY HEALTH CENTRE MUTTADA	22
FAMILY HEALTH CENTRE KATTAKADA	21
FAMILY HEALTH CENTRE MUDAKKAL	21
PRIMARY HEALTH CENTRE BHARATHANNOOR	20

3.1 eHealth Performance - Reception Module

Reception Module is considered to be functional in an institution only if the number of total visits for the month is of minimum 500.

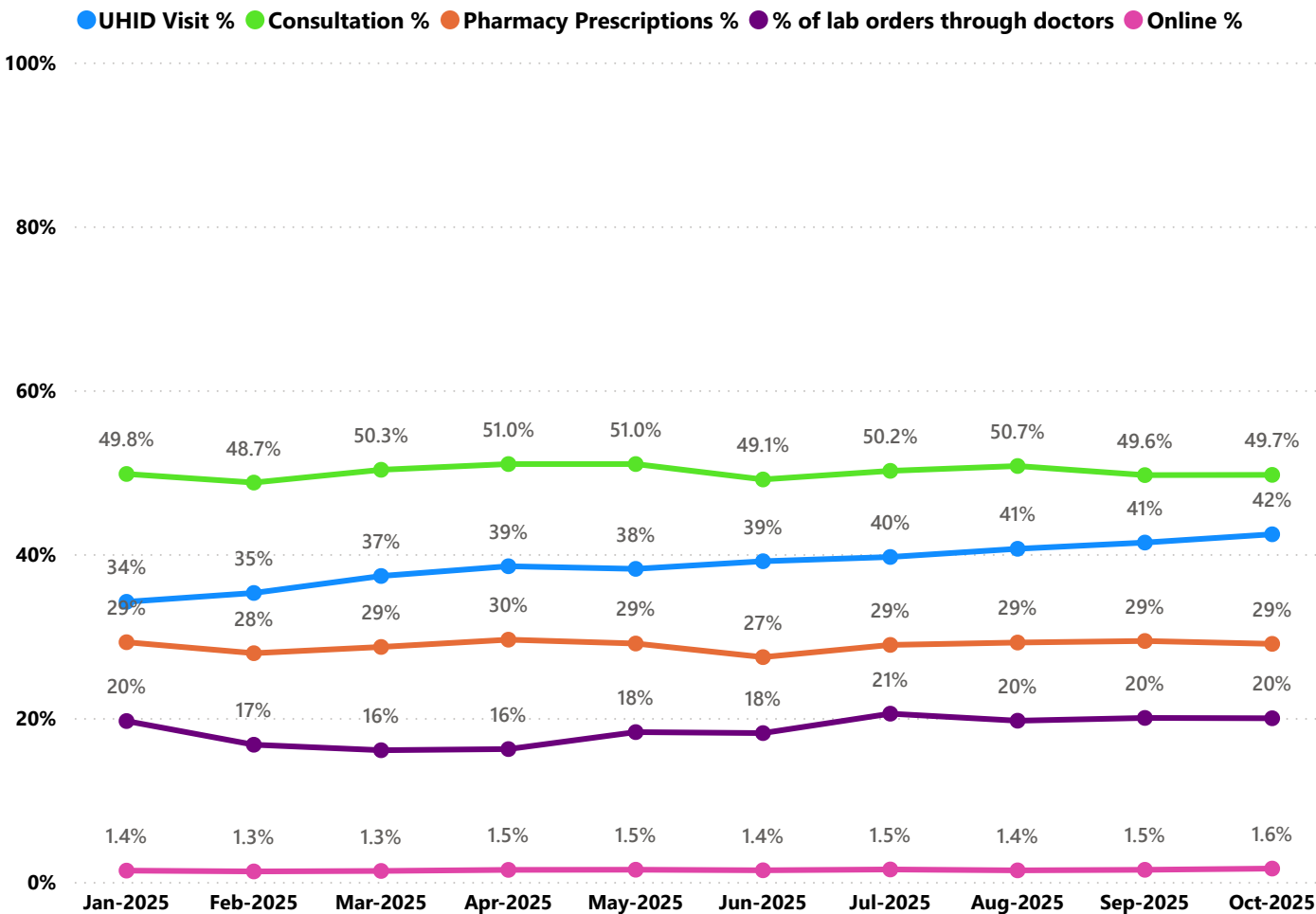
District	Institution Count	Institutions with Reception	% of institutions with Reception
THIRUVANANTHAPURAM	118	95	80.51%
ERNAKULAM	88	70	79.55%
MALAPPURAM	85	67	78.82%
THRISSUR	81	66	81.48%
KOZHIKODE	79	71	89.87%
KANNUR	59	43	72.88%
PALAKKAD	59	45	76.27%
ALAPPUZHA	53	39	73.58%
KOLLAM	49	33	67.35%
KOTTAYAM	46	38	82.61%
KASARAGOD	35	25	71.43%
WAYANAD	33	27	81.82%
PATHANAMTHITTA	31	23	74.19%
IDUKKI	27	23	85.19%

Institutions where the reception module is either not started or not using

Hospital Name

COMMUNITY HEALTH CENTRE ANCHUTHENGU
COMMUNITY HEALTH CENTRE VELLANAD
FAMILY HEALTH CENTRE MANICKAL
FAMILY HEALTH CENTRE VELI
INTEGRATED FAMILY HEALTH CENTRE PANGAPPARA
PRIMARY HEALTH CENTRE KIZHUVILAM
URBAN HEALTH CENTRE MANNANTHALA

3.2 e-Health Performance Trend



- UHID Visit % is calculated as $(UHID\ Visits / Total\ Visit) \times 100$
- Consultation % is calculated as $(Doctor\ Consultation / OP\ Visits) \times 100$
- Pharmacy % is calculated as $(Pharmacy\ Prescriptions / Total\ OP\ Visits) \times 100$
- Lab % is calculated as $(Lab\ orders\ given\ by\ doctors / Total\ Lab\ Orders) \times 100$
- Online % is calculated as $(Online\ appointments\ via\ web\ portal / Total\ OP\ Visits) \times 100$

3.3 e-Health Performance Indicators

Hospital	UHID Visit %	Consultation %	Pharmacy orders by doctors %	% of Lab Orders given by Doctors
FAMILY HEALTH CENTRE ANAKUDY	94.72%	95.44%	89.46%	31.64%
FAMILY HEALTH CENTRE PULIMATH	84.84%	88.90%	86.50%	43.85%
FAMILY HEALTH CENTRE PERUMPAZHUTHOOR	84.25%	93.49%	69.34%	88.10%
FAMILY HEALTH CENTRE PULLAMPARA	83.56%	51.33%	28.36%	28.53%
FAMILY HEALTH CENTRE KOLLAYIL	82.48%	98.60%	87.20%	68.19%
FAMILY HEALTH CENTRE VEERANAKAVU	76.74%	94.83%	97.59%	89.70%
URBAN PRIMARY HEALTH CENTRE MAMBAZHAKKARA	75.33%	98.03%	72.74%	99.56%
FAMILY HEALTH CENTRE VEMBAYAM	74.87%	98.77%	87.99%	24.54%
FAMILY HEALTH CENTRE KOTTUKAL	72.93%	94.42%	80.88%	38.14%
FAMILY HEALTH CENTRE PARASUVAIKKAL PARASALA	71.22%	96.83%	88.80%	0.00%
URBAN PRIMARY HEALTH CENTRE THRIKKANNAPURAM	69.26%	97.51%	82.27%	97.50%
FAMILY HEALTH CENTRE THONIPARA	68.78%	94.14%	85.84%	56.88%
FAMILY HEALTH CENTRE KALLIKKAD NEW	67.41%	99.76%	91.93%	84.95%
FAMILY HEALTH CENTRE CHERUNNIYOOR	66.93%	67.42%	51.40%	100.00%
FAMILY HEALTH CENTRE BALARAMAPURAM	66.20%	98.41%	66.12%	78.85%
FAMILY HEALTH CENTRE POOZHANAD	65.66%	99.60%	89.02%	98.09%
FAMILY HEALTH CENTRE PERINGAMMALA	65.51%	35.11%	2.66%	5.79%
FAMILY HEALTH CENTRE KATTAKADA	65.32%	40.39%	15.59%	5.95%
URBAN PRIMARY HEALTH CENTRE CHALAI	64.82%	99.56%	83.04%	100.00%
FAMILY HEALTH CENTRE VAMANAPURAM	64.54%	96.92%	52.87%	67.17%
FAMILY HEALTH CENTRE CHEMBOOR	64.16%	99.55%	78.26%	90.75%
FAMILY HEALTH CENTRE MARANALLOOR	64.03%	92.51%	79.68%	27.68%
FAMILY HEALTH CENTRE ARUVIKKARA	62.06%	97.64%	58.72%	59.93%
FAMILY HEALTH CENTRE AMACHAL NEW	61.91%	99.01%	73.00%	90.10%
FAMILY HEALTH CENTRE VILAVOORKKAL	61.75%	97.39%	79.73%	70.95%
FAMILY HEALTH CENTRE CHEMMARUTHY	61.37%	88.62%	48.63%	8.72%
FAMILY HEALTH CENTRE AMBOORI	61.09%	84.12%	77.38%	94.30%
FAMILY HEALTH CENTRE KARAVARAM	61.00%	82.18%	64.80%	33.90%
FAMILY HEALTH CENTRE VETTOOR	60.53%	57.63%	12.76%	38.73%
FAMILY HEALTH CENTRE PANA VOOR	59.75%	89.90%	82.34%	73.23%
COMMUNITY HEALTH CENTRE ANDOORKONAM	59.66%	98.57%	64.32%	61.53%
FAMILY HEALTH CENTRE THOLICODE	59.30%	90.87%	74.93%	57.91%
FAMILY HEALTH CENTRE EDAVA	59.23%	92.68%	88.82%	29.09%
FAMILY HEALTH CENTRE MALAYADI	57.95%	77.20%	52.38%	13.46%
URBAN PRIMARY HEALTH CENTRE VATTIYOORKAVU	57.76%	77.61%	71.99%	100.00%
PRIMARY HEALTH CENTRE AZHOOR	57.66%	65.56%	65.38%	100.00%
FAMILY HEALTH CENTRE UZHAMALAKKAL	57.04%	88.31%	83.99%	74.57%
FAMILY HEALTH CENTRE KUTTICHAL	56.90%	99.30%	81.99%	92.25%
FAMILY HEALTH CENTRE ANAD	56.82%	81.42%	42.84%	26.60%
COMMUNITY HEALTH CENTRE PALLICKAL	56.22%	89.49%	54.46%	31.32%
COMMUNITY HEALTH CENTRE VENPAKAL	56.17%	84.78%	53.14%	0.35%
URBAN PRIMARY HEALTH CENTRE POOVATHOOR	56.02%	80.85%	68.87%	100.00%
URBAN PRIMARY HEALTH CENTRE MUTTADA	55.99%	24.30%	18.98%	25.44%

3.3 e-Health Performance Indicators

Hospital	UHID Visit %	Consultation %	Pharmacy ordered by doctors %	% of Lab Orders given by Doctors
TALUK HOSPITAL FORT THIRUVANANTHAPURAM	19.26%	0.00%	0.00%	0.00%
TALUK HEADQUARTERS HOSPITAL CHIRAYINKEEZH	19.88%	0.00%	0.00%	0.00%
MENTAL HEALTH CENTRE PEROORKADA	2.19%	17.94%	0.07%	0.00%
SECRETARIAT HEALTH CENTRE THIRUVANANTHAPURAM	38.08%	0.00%	0.00%	0.00%
GENERAL HOSPITAL THIRUVANANTHAPURAM	37.39%	8.06%	2.05%	0.36%
DISTRICT HOSPITAL NEDUMANGAD	21.81%	11.75%	0.00%	0.03%
COMMUNITY HEALTH CENTRE KANYAKULANGARA	32.93%	2.17%	0.49%	0.26%
COMMUNITY HEALTH CENTRE POOVAR	43.06%	1.46%	0.72%	1.03%
TALUK HOSPITAL NEMOM	25.25%	27.17%	16.70%	9.15%
DISTRICT MODEL HOSPITAL PEROORKADA	33.53%	24.20%	9.17%	0.19%
COMMUNITY HEALTH CENTRE VILAPPIL	47.81%	13.88%	5.70%	8.52%
WOMEN AND CHILDREN HOSPITAL THYCAUD	35.13%	36.50%	0.52%	1.64%
COMMUNITY HEALTH CENTRE PUTHENTHOPE	19.97%	49.96%	11.51%	0.11%
COMMUNITY HEALTH CENTRE PULLUVILA	32.54%	19.11%	7.56%	23.81%
TALUK HOSPITAL VITHURA	49.06%	27.45%	15.72%	6.75%
TALUK HEADQUARTERS HOSPITAL VARKALA	30.73%	49.62%	2.57%	2.35%
COMMUNITY HEALTH CENTRE KALLARA	48.14%	29.84%	10.82%	0.00%
CHEST DISEASES HOSPITAL PULAYANARKOTTAH	48.45%	30.83%	7.57%	2.67%
GENERAL HOSPITAL NEYYATTINKARA	51.03%	35.77%	3.52%	3.28%
FAMILY HEALTH CENTRE KEEZHATTINGAL	32.18%	38.72%	29.49%	1.47%
FAMILY HEALTH CENTRE PERINGAMMALA	65.51%	35.11%	2.66%	5.79%
COMMUNITY HEALTH CENTRE PALODE	39.65%	67.84%	3.61%	0.00%
URBAN PRIMARY HEALTH CENTRE MUTTADA	55.99%	24.30%	18.98%	25.44%
FAMILY HEALTH CENTRE POONTHURA	6.12%	66.57%	11.29%	35.00%
COMMUNITY HEALTH CENTRE ARYANAD	54.35%	20.94%	12.46%	29.75%
FAMILY HEALTH CENTRE MUDAKKAL	47.11%	64.69%	0.44%	14.32%
FAMILY HEALTH CENTRE KATTAKADA	65.32%	40.39%	15.59%	5.95%
PRIMARY HEALTH CENTRE BHARATHANNOOR	24.18%	17.34%	0.00%	100.00%
COMMUNITY HEALTH CENTRE KESAVAPURAM	37.52%	71.50%	17.78%	23.06%
COASTAL SPECIALITY HOSPITAL VALIYATHURA	18.91%	59.86%	30.75%	41.64%
FAMILY HEALTH CENTRE KARODE	49.34%	98.43%	18.79%	0.00%
DISTRICT TB CENTRE THIRUVANANTHAPURAM	33.67%	92.86%	23.98%	0.00%
FAMILY HEALTH CENTRE VETTOOR	60.53%	57.63%	12.76%	38.73%
FAMILY HEALTH CENTRE PALLICHAL	44.76%	50.95%	44.59%	20.26%
FAMILY HEALTH CENTRE PUTHUKURICHY	8.95%	89.06%	53.96%	36.01%
COMMUNITY HEALTH CENTRE IRANIMUTTOM	31.21%	66.06%	52.45%	24.79%
FAMILY HEALTH CENTRE PULLAMPARA	83.56%	51.33%	28.36%	28.53%
FAMILY HEALTH CENTRE KULATHOOR	44.26%	59.65%	32.58%	50.17%
COMMUNITY HEALTH CENTRE MANAMBOOR	40.65%	23.84%	20.28%	100.00%
FAMILY HEALTH CENTRE MALAYADI	57.95%	77.20%	52.38%	13.46%
FAMILY HEALTH CENTRE CHEMMARUTHY	61.37%	88.62%	48.63%	8.72%
COMMUNITY HEALTH CENTRE VENPAKAL	56.17%	84.78%	53.14%	0.35%



Non - eHealth Institutions Started

District	VPN Institutions	Reception Started	Advance Appointment Started
THIRUVANANTHAPURAM	37	37	6
MALAPPURAM	29	24	11
ALAPPUZHA	24	23	6
THRISSUR	21	17	5
ERNAKULAM	20	17	4
KOLLAM	16	16	10
KANNUR	11	7	3
KASARAGOD	11	11	2
PALAKKAD	11	10	5
PATHANAMTHITTA	10	10	6
KOZHIKODE	9	9	3
WAYANAD	9	9	3
IDUKKI	8	8	3
KOTTAYAM	7	7	3
Total	223	205	70

4. Status of Modules Usage in Hospitals

District wise status of live institutions and the count of various modules [Reception, OP Consultation, Lab, Pharmacy] started / functional.

District	Live Institutions	Reception	Consultation	Pharmacy ordered by doctors	Lab ordered by doctors
THIRUVANANTHAPURAM	102	95 (93%)	90 (88%)	79 (77%)	81 (79%)
ERNAKULAM	73	70 (96%)	58 (79%)	50 (68%)	47 (64%)
KOZHIKODE	73	71 (97%)	59 (81%)	55 (75%)	55 (75%)
THRISSUR	72	66 (92%)	63 (88%)	62 (86%)	62 (86%)
MALAPPURAM	69	67 (97%)	64 (93%)	56 (81%)	59 (86%)
PALAKKAD	51	45 (88%)	42 (82%)	42 (82%)	39 (76%)
KANNUR	49	43 (88%)	36 (73%)	32 (65%)	29 (59%)
KOTTAYAM	41	38 (93%)	36 (88%)	33 (80%)	30 (73%)
ALAPPUZHA	40	39 (98%)	36 (90%)	35 (88%)	32 (80%)
KOLLAM	36	33 (92%)	31 (86%)	31 (86%)	28 (78%)
KASARAGOD	27	25 (93%)	22 (81%)	19 (70%)	16 (59%)
WAYANAD	27	27 (100%)	25 (93%)	24 (89%)	23 (85%)
PATHANAMTHITTA	25	23 (92%)	19 (76%)	19 (76%)	21 (84%)
IDUKKI	23	23 (100%)	22 (96%)	22 (96%)	21 (91%)
Total	708	665 (94%)	603 (85%)	559 (79%)	543 (77%)

The reception has started with at least 500 total visits, the OP module has started with at least 500 consultations, pharmacy orders by doctors are at least 100, and lab orders by doctors are at least 100.



5. Status of Modules Usage in Hospitals

District wise status of live institutions and the count of various modules [Reception, OP Consultation, Lab, Pharmacy] started / functional.

District	Live Institutions	Reception Started	OP Module Started	Pharmacy Started	Lab Started	Billing Started
THIRUVANANTHAPURAM	102	95	90	85	79	81
ERNAKULAM	73	70	58	55	42	39
KOZHIKODE	73	71	59	56	52	60
THRISSUR	72	66	63	62	62	58
MALAPPURAM	69	67	64	57	53	39
PALAKKAD	51	45	42	42	34	35
KANNUR	49	43	36	32	25	30
KOTTAYAM	41	38	36	33	25	26
ALAPPUZHA	40	39	36	36	31	21
KOLLAM	36	33	31	32	28	29
KASARAGOD	27	25	22	21	15	15
WAYANAD	27	27	25	25	23	22
PATHANAMTHITTA	25	23	19	19	19	21
IDUKKI	23	23	22	22	19	16
Total	708	665	603	577	507	492

6. 1 Online Appointment Booking in Hospitals (except Medical Colleges)

