

1. eHealth Kerala - Vital Statistics

Hospital Type	Live Institutions
Family Health Centre	34
Taluk Hospital	8
Urban Primary Health Centre	7
Community Health Centre	2
Primary Health Centre	2
District Hospital	1
General Hospital	1
Medical College Hospital	1
Specialty Hospital - Women Children	1
Taluk Headquarters Hospital	1
Total	58

2. eHealth - District Ranking Matrix Based on Performance of all Institutions (except Medical Colleges)

The ranking matrix showcases the performance of districts in providing eHealth services through all institutions (excluding Medical Colleges) based on six different parameters.

These parameters include:

1.

Number of institutions where the reception module is currently using.
2.

Percentage of UHID Visits.
3.

Percentage of Doctor Consultations.
4.

Percentage of Pharmacy Prescriptions by doctors.
5.

Percentage of lab orders through doctors.
6.

Number of Live Institutions.

Weightage is assigned to the percentages calculated in intervals of 10. The rank is determined based on the sum of these weightages.

The top-performing districts should aim to maintain their positions, while the average and low-performing districts should strive to reach the 'top four' league.

The ranking matrix for the current month, September 2025, along with the previous two months, is provided in the table below.

District	July	August	September
IDUKKI	1	1	1
WAYANAD	2	2	2
PALAKKAD	3	3	3
KASARAGOD	9	8	4
KOZHIKODE	6	7	4
MALAPPURAM	7	6	4
ALAPPUZHA	5	5	5
THRISSUR	4	4	5
THIRUVANANTHAPURAM	9	9	6
PATHANAMTHITTA	10	11	7
KOLLAM	9	10	8
KOTTAYAM	8	9	8
ERNAKULAM	11	12	9
KANNUR	10	9	10

- Best performing
- Average performing
- Low performing

**NB:** Please note that institutions started via VPN are not considered in the rank and usage calculations.

3. eHealth - Institution Level Ranking (except Medical Colleges)

Hospital	Rank
FAMILY HEALTH CENTRE UDAYAGIRI	1
FAMILY HEALTH CENTRE PARASSINIKADAVU	2
FAMILY HEALTH CENTRE ALAKODE THERTHALLY	3
FAMILY HEALTH CENTRE CHIRAKKAL	3
FAMILY HEALTH CENTRE RAMANTHALI	4
FAMILY HEALTH CENTRE VALAPATTANAM	4
FAMILY HEALTH CENTRE MALAPPATTAM	5
FAMILY HEALTH CENTRE KUTTIATTOOR	6
FAMILY HEALTH CENTRE NEW MAHE	6
FAMILY HEALTH CENTRE ANJARAKKANDY	7
FAMILY HEALTH CENTRE CHENGALAYI	8
FAMILY HEALTH CENTRE CHERUKUNNU	8
FAMILY HEALTH CENTRE ERAMAM KUTTUR	8
URBAN PRIMARY HEALTH CENTRE PANOOR	8
FAMILY HEALTH CENTRE MUNDERI	9
FAMILY HEALTH CENTRE ETTIKULAM	10
PRIMARY HEALTH CENTRE KURUMATHUR	10
FAMILY HEALTH CENTRE KADIRUR	11
FAMILY HEALTH CENTRE CHERUTHAZHAM	12
FAMILY HEALTH CENTRE MORAZHA FISHERIES	12
FAMILY HEALTH CENTRE PATTUVAM	13
FAMILY HEALTH CENTRE KANKOL ALAPPADAMBA	14
FAMILY HEALTH CENTRE PUTHIYANGADI FISHERIES	15
FAMILY HEALTH CENTRE KADANNAPPALLY	16
FAMILY HEALTH CENTRE MOKERI	16
FAMILY HEALTH CENTRE THILLENKERRY	17
EK NAYANAR MEMORIAL GOVT WOMEN AND CHILDREN HOSPITAL MANGATTUPARAMBA	18
FAMILY HEALTH CENTRE MUZHAPPILANGAD	18
FAMILY HEALTH CENTRE NARATH	18
COMMUNITY HEALTH CENTRE MATTOOL	19
COMMUNITY HEALTH CENTRE PATTIAM	20
URBAN PRIMARY HEALTH CENTRE KOOVODE	20
FAMILY HEALTH CENTRE VALLITHODE	21
FAMILY HEALTH CENTRE KOTTIYOOR	22
FAMILY HEALTH CENTRE PULINGOME	23
URBAN PRIMARY HEALTH CENTRE MAITHANAPPALLY	24

Hospital	Rank
FAMILY HEALTH CENTRE KALLIASSERY	28
FAMILY HEALTH CENTRE KOODALI	28
FAMILY HEALTH CENTRE KUNHIMANGALAM	28
FAMILY HEALTH CENTRE THRIPRANGOTTUR	28
URBAN PRIMARY HEALTH CENTRE KOLASSERY	28
DISTRICT HOSPITAL KANNUR	27
FAMILY HEALTH CENTRE KOTTAYAM MALABAR	26
GENERAL HOSPITAL THALASSERY	26
TALUK HEAD QUARTERS HOSPITAL KUTHUPARAMBA	26
URBAN PRIMARY HEALTH CENTRE KUTHUPARAMBA	26
GOVERNMENT MEDICAL COLLEGE KANNUR	25
URBAN PRIMARY HEALTH CENTRE MAITHANAPPALLY	24
URBAN PRIMARY HEALTH CENTRE PORORA	24
FAMILY HEALTH CENTRE PULINGOME	23
FAMILY HEALTH CENTRE KOTTIYOOR	22
FAMILY HEALTH CENTRE VALLITHODE	21
COMMUNITY HEALTH CENTRE PATTIAM	20
URBAN PRIMARY HEALTH CENTRE KOOVODE	20
COMMUNITY HEALTH CENTRE MATTOOL	19
EK NAYANAR MEMORIAL GOVT WOMEN AND CHILDREN HOSPITAL MANGATTUPARAMBA	18
FAMILY HEALTH CENTRE MUZHAPPILANGAD	18
FAMILY HEALTH CENTRE NARATH	18
FAMILY HEALTH CENTRE THILLENKERRY	17
FAMILY HEALTH CENTRE KADANNAPPALLY	16
FAMILY HEALTH CENTRE MOKERI	16
FAMILY HEALTH CENTRE PUTHIYANGADI FISHERIES	15
FAMILY HEALTH CENTRE KANKOL ALAPPADAMBA	14
FAMILY HEALTH CENTRE PATTUVAM	13
FAMILY HEALTH CENTRE CHERUTHAZHAM	12
FAMILY HEALTH CENTRE MORAZHA FISHERIES	12
FAMILY HEALTH CENTRE KADIRUR	11
FAMILY HEALTH CENTRE ETTIKULAM	10
PRIMARY HEALTH CENTRE KURUMATHUR	10
FAMILY HEALTH CENTRE MUNDERI	9

3.1 eHealth Performance - Reception Module

Reception Module is considered to be functional in an institution only if the number of total visits for the month is of minimum 500.

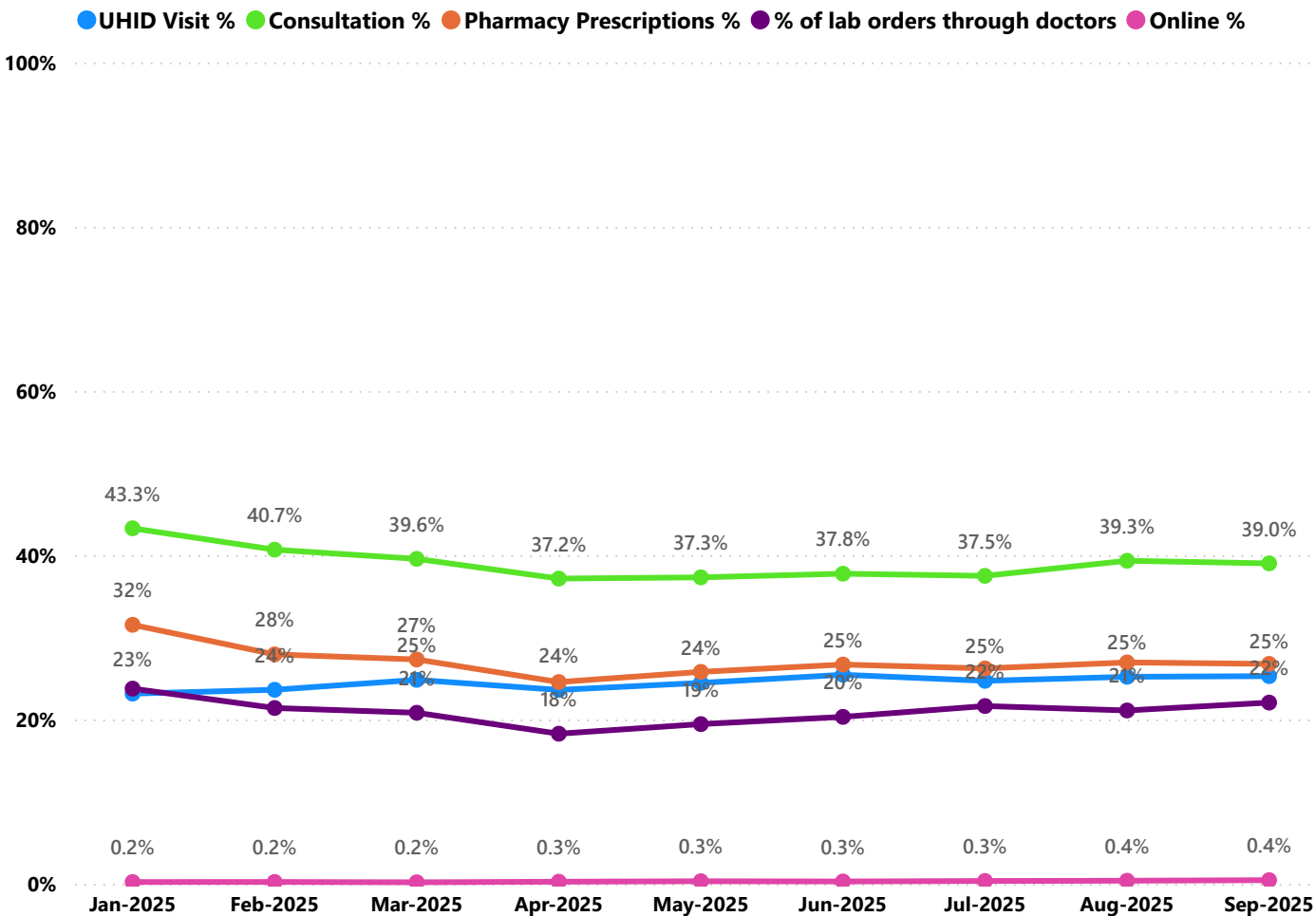
District	Institution Count	Institutions with Reception	% of institutions with Reception
KOZHIKODE	68	66	97.06%
KOTTAYAM	43	37	86.05%
THIRUVANANTHAPURAM	117	100	85.47%
IDUKKI	27	23	85.19%
THRISSUR	78	66	84.62%
WAYANAD	32	27	84.38%
ERNAKULAM	88	71	80.68%
PALAKKAD	59	46	77.97%
MALAPPURAM	85	66	77.65%
PATHANAMTHITTA	31	23	74.19%
KANNUR	57	42	73.68%
ALAPPUZHA	51	36	70.59%
KASARAGOD	34	24	70.59%
KOLLAM	47	30	63.83%

Institutions where the reception module is either not started or not using

Hospital Name
URBAN PRIMARY HEALTH CENTRE MAITHANAPPALLY
URBAN PRIMARY HEALTH CENTRE KOLASSERY
FAMILY HEALTH CENTRE THRIPRANGOTTUR
FAMILY HEALTH CENTRE KUNHIMANGALAM
FAMILY HEALTH CENTRE KOODALI
FAMILY HEALTH CENTRE KALLIASSERY



3.2 e-Health Performance Trend



- UHID Visit % is calculated as (UHID Visits / Total Visit ) \*100
- Consultation % is calculated as (Doctor Consultation / OP Visits ) \*100
- Pharmacy % is calculated as (Pharmacy Prescriptions/ Total OP Visits ) \*100
- Lab % is calculated as ( Lab orders given by doctors/Total Lab Orders ) \*100
- Online % is calculated as ( Online appointments via web portal/Total OP Visits ) \*100

## 3.3 e-Health Performance Indicators

Hospital	UHID Visit %	Consultation %	Pharmacy Prescriptions %	% of Lab Orders given by Doctors
FAMILY HEALTH CENTRE UDAYAGIRI	83.64%	98.73%	90.11%	100.00%
FAMILY HEALTH CENTRE PARASSINIKADAVU	74.20%	96.42%	90.07%	100.00%
FAMILY HEALTH CENTRE CHIRAKKAL	73.15%	99.90%	82.11%	93.19%
FAMILY HEALTH CENTRE ALAKODE THERTHALLY	70.59%	97.78%	87.38%	97.32%
FAMILY HEALTH CENTRE VALAPATTANAM	62.47%	97.18%	86.94%	91.56%
FAMILY HEALTH CENTRE NEW MAHE	60.94%	96.02%	85.59%	76.81%
FAMILY HEALTH CENTRE RAMANTHALI	59.35%	98.12%	91.07%	99.72%
FAMILY HEALTH CENTRE ERAMAM KUTTUR	59.04%	93.69%	91.69%	58.89%
FAMILY HEALTH CENTRE CHERUKUNNU	54.14%	98.15%	83.17%	69.31%
FAMILY HEALTH CENTRE MALAPPATTAM	53.60%	93.65%	89.39%	100.00%
FAMILY HEALTH CENTRE PULINGOME	51.87%	0.65%	0.65%	0.00%
FAMILY HEALTH CENTRE ANJARAKKANDY	51.68%	88.91%	86.98%	84.92%
FAMILY HEALTH CENTRE KUTTIATTOOR	51.08%	87.75%	85.57%	91.67%
PRIMARY HEALTH CENTRE KURUMATHUR	50.51%	91.34%	88.62%	46.04%
FAMILY HEALTH CENTRE CHENGALAYI	46.43%	98.95%	90.62%	62.03%
FAMILY HEALTH CENTRE KANKOL ALAPPADAMBA	45.11%	77.12%	70.60%	44.22%
URBAN PRIMARY HEALTH CENTRE PORORA	41.57%	0.00%	0.00%	0.00%
FAMILY HEALTH CENTRE MORAZHA FISHERIES	41.00%	93.99%	88.98%	37.21%
FAMILY HEALTH CENTRE NARATH	40.46%	77.38%	73.20%	8.90%
FAMILY HEALTH CENTRE KOTTIYOOR	40.15%	43.04%	41.38%	0.81%
FAMILY HEALTH CENTRE KADANNAPPALLY	39.97%	97.89%	82.55%	8.74%
FAMILY HEALTH CENTRE ETTIKULAM	39.68%	98.57%	89.08%	64.59%
FAMILY HEALTH CENTRE CHERUTHAZHAM	38.34%	98.18%	71.25%	58.28%
FAMILY HEALTH CENTRE PUTHIYANGADI FISHERIES	36.75%	95.08%	90.16%	0.00%
FAMILY HEALTH CENTRE VALLITHODE	33.93%	86.55%	0.00%	27.55%
FAMILY HEALTH CENTRE PATTUVAM	28.29%	88.51%	85.13%	51.52%
FAMILY HEALTH CENTRE MUNDERI	27.39%	97.53%	77.55%	99.15%
EK NAYANAR MEMORIAL GOVT WOMEN AND CHILDREN HOSPITAL MANGATTUPARAMBA	23.65%	67.51%	14.51%	96.43%
FAMILY HEALTH CENTRE KADIRUR	23.48%	95.23%	74.82%	77.60%
GOVERNMENT MEDICAL COLLEGE KANNUR	22.34%	17.60%	0.47%	0.32%
COMMUNITY HEALTH CENTRE PATTIAM	22.13%	59.51%	0.00%	88.89%
COMMUNITY HEALTH CENTRE MATTOOL	22.01%	85.42%	62.55%	8.55%
URBAN PRIMARY HEALTH CENTRE PANOOR	21.11%	97.90%	84.52%	91.21%
FAMILY HEALTH CENTRE MOKERI	18.06%	90.87%	48.55%	60.71%
GENERAL HOSPITAL THALASSERY	17.96%	0.00%	0.00%	0.00%
URBAN PRIMARY HEALTH CENTRE KOOVODE	17.95%	68.17%	53.00%	31.52%
TALUK HEAD QUARTERS HOSPITAL KUTHUPARAMBA	17.87%	0.00%	0.00%	0.00%
FAMILY HEALTH CENTRE THILLENKERRY	16.98%	55.79%	45.59%	100.00%
FAMILY HEALTH CENTRE MUZHAPPILANGAD	15.91%	82.56%	0.40%	100.00%
URBAN PRIMARY HEALTH CENTRE KUTHUPARAMBA	11.64%	0.00%	0.00%	0.00%
FAMILY HEALTH CENTRE KOTTAYAM MALABAR	11.57%	0.00%	0.00%	0.00%
FAMILY HEALTH CENTRE TUPIDBANGOTTUR	8.25%	0.00%	0.00%	0.00%

## 3.3 e-Health Performance Indicators

Hospital	UHID Visit %	Consultation %	Pharmacy Prescriptions %	% of Lab Orders given by Doctors
URBAN PRIMARY HEALTH CENTRE MAITHANAPPALLY	0.00%	100.00%	60.00%	0.00%
FAMILY HEALTH CENTRE KALLIASSERY	0.00%	0.00%	0.00%	0.00%
FAMILY HEALTH CENTRE KOODALI	0.00%	0.00%	0.00%	0.00%
FAMILY HEALTH CENTRE KUNHIMANGALAM	0.00%	0.00%	0.00%	0.00%
URBAN PRIMARY HEALTH CENTRE KOLASSERY	0.00%	0.00%	0.00%	0.00%
DISTRICT HOSPITAL KANNUR	2.30%	0.00%	0.00%	0.00%
FAMILY HEALTH CENTRE THRIPRANGOTTUR	8.25%	0.00%	0.00%	0.00%
FAMILY HEALTH CENTRE KOTTAYAM MALABAR	11.57%	0.00%	0.00%	0.00%
URBAN PRIMARY HEALTH CENTRE KUTHUPARAMBA	11.64%	0.00%	0.00%	0.00%
FAMILY HEALTH CENTRE MUZHAPPILANGAD	15.91%	82.56%	0.40%	100.00%
FAMILY HEALTH CENTRE THILLENKERRY	16.98%	55.79%	45.59%	100.00%
TALUK HEAD QUARTERS HOSPITAL KUTHUPARAMBA	17.87%	0.00%	0.00%	0.00%
URBAN PRIMARY HEALTH CENTRE KOOVODE	17.95%	68.17%	53.00%	31.52%
GENERAL HOSPITAL THALASSERY	17.96%	0.00%	0.00%	0.00%
FAMILY HEALTH CENTRE MOKERI	18.06%	90.87%	48.55%	60.71%
URBAN PRIMARY HEALTH CENTRE PANOOR	21.11%	97.90%	84.52%	91.21%
COMMUNITY HEALTH CENTRE MATTOOL	22.01%	85.42%	62.55%	8.55%
COMMUNITY HEALTH CENTRE PATTIAM	22.13%	59.51%	0.00%	88.89%
GOVERNMENT MEDICAL COLLEGE KANNUR	22.34%	17.60%	0.47%	0.32%
FAMILY HEALTH CENTRE KADIRUR	23.48%	95.23%	74.82%	77.60%
EK NAYANAR MEMORIAL GOVT WOMEN AND CHILDREN HOSPITAL MANGATTUPARAMBA	23.65%	67.51%	14.51%	96.43%
FAMILY HEALTH CENTRE MUNDERI	27.39%	97.53%	77.55%	99.15%
FAMILY HEALTH CENTRE PATTUVAM	28.29%	88.51%	85.13%	51.52%
FAMILY HEALTH CENTRE VALLITHODE	33.93%	86.55%	0.00%	27.55%
FAMILY HEALTH CENTRE PUTHIYANGADI FISHERIES	36.75%	95.08%	90.16%	0.00%
FAMILY HEALTH CENTRE CHERUTHAZHAM	38.34%	98.18%	71.25%	58.28%
FAMILY HEALTH CENTRE ETTIKULAM	39.68%	98.57%	89.08%	64.59%
FAMILY HEALTH CENTRE KADANNAPPALLY	39.97%	97.89%	82.55%	8.74%
FAMILY HEALTH CENTRE KOTTIYOOR	40.15%	43.04%	41.38%	0.81%
FAMILY HEALTH CENTRE NARATH	40.46%	77.38%	73.20%	8.90%
FAMILY HEALTH CENTRE MORAZHA FISHERIES	41.00%	93.99%	88.98%	37.21%
URBAN PRIMARY HEALTH CENTRE PORORA	41.57%	0.00%	0.00%	0.00%
FAMILY HEALTH CENTRE KANKOL ALAPPADAMBA	45.11%	77.12%	70.60%	44.22%
FAMILY HEALTH CENTRE CHENGALAYI	46.43%	98.95%	90.62%	62.03%
PRIMARY HEALTH CENTRE KURUMATHUR	50.51%	91.34%	88.62%	46.04%
FAMILY HEALTH CENTRE KUTTIATTOOR	51.08%	87.75%	85.57%	91.67%
FAMILY HEALTH CENTRE ANJARAKKANDY	51.68%	88.91%	86.98%	84.92%
FAMILY HEALTH CENTRE PULINGOME	51.87%	0.65%	0.65%	0.00%
FAMILY HEALTH CENTRE MALAPPATTAM	53.60%	93.65%	89.39%	100.00%
FAMILY HEALTH CENTRE CHERUKUNNU	54.14%	98.15%	83.17%	69.31%
FAMILY HEALTH CENTRE ERAMAM KUTTUR	59.04%	93.69%	91.69%	58.89%

Non - eHealth Institutions Started

Hospital Name	Advance Appointment/Reception
COMMUNITY HEALTH CENTRE KOOTTUMUGHAM	2284
TALUK HEADQUARTERS HOSPITAL TALIPARAMBA	2
TALUK HOSPITAL IRIKKUR	1
TALUK HOSPITAL IRITTY	2
TALUK HOSPITAL PANOOR	0
TALUK HOSPITAL PAYYANNUR	15157
TALUK HOSPITAL PAZHAYANGADI	0
TALUK HOSPITAL PERAVOOR	0
TALUK HOSPITAL PERINGOME	1
URBAN PRIMARY HEALTH CENTRE ANTHOOR	1534
Total	18981



4. Status of Modules Usage in Hospitals

District wise status of live institutions and the count of various modules [Reception, OP Consultation, Lab, Pharmacy] started / functional.

District	Live Institutions	Reception	Consultation	Pharmacy	Lab
THIRUVANANTHAPURAM	105	100 (95%)	92 (88%)	77 (73%)	83 (79%)
ERNAKULAM	73	71 (97%)	58 (79%)	46 (63%)	46 (63%)
THRISSUR	71	66 (93%)	64 (90%)	62 (87%)	62 (87%)
MALAPPURAM	68	66 (97%)	62 (91%)	54 (79%)	51 (75%)
KOZHIKODE	66	66 (100%)	60 (91%)	55 (83%)	55 (83%)
PALAKKAD	49	46 (94%)	41 (84%)	38 (78%)	39 (80%)
KANNUR	44	42 (95%)	35 (80%)	31 (70%)	29 (66%)
KOTTAYAM	39	37 (95%)	36 (92%)	31 (79%)	31 (79%)
ALAPPUZHA	37	36 (97%)	36 (97%)	34 (92%)	33 (89%)
KOLLAM	32	30 (94%)	29 (91%)	29 (91%)	27 (84%)
WAYANAD	27	27 (100%)	25 (93%)	24 (89%)	24 (89%)
KASARAGOD	24	24 (100%)	22 (92%)	20 (83%)	18 (75%)
IDUKKI	23	23 (100%)	22 (96%)	22 (96%)	20 (87%)
PATHANAMTHITTA	23	23 (100%)	18 (78%)	18 (78%)	19 (83%)
Total	681	657 (96%)	600 (88%)	541 (79%)	537 (79%)



5. 1 Online Appointment Booking in Hospitals (except Medical Colleges)

